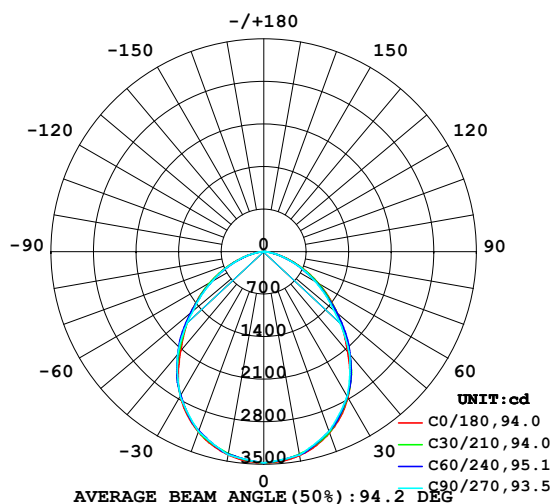


# LUMINAIRE PHOTOMETRIC TEST REPORT

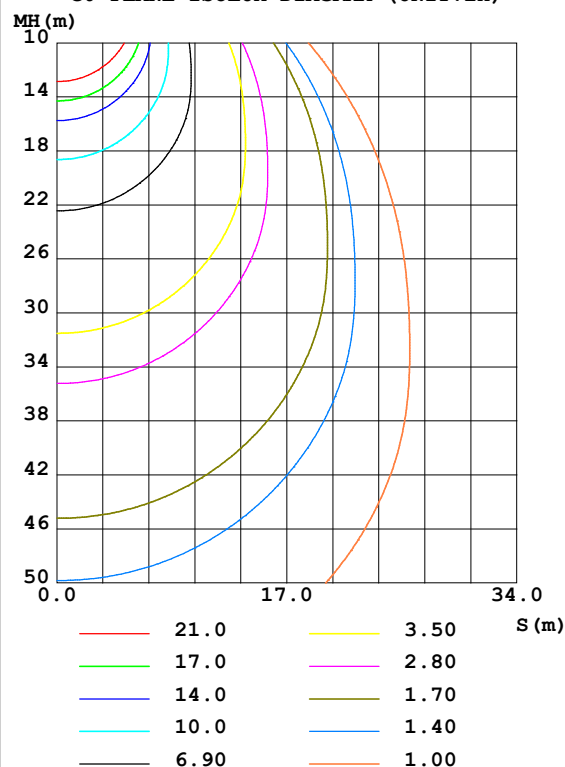
Test:U:119.83V I:0.6871A P:81.631W PF:0.9914 Freq:59.98Hz Lamp Flux:7856.33x1 lm		
NAME: LED Explosion-proof Flood Light	TYPE:Floodlight	WEIGHT:N/A
SPEC.:80W/3000K/120°	DIM.: 270*340mm	SERIAL No.:N/A
MFR.: NJZ Lighting Technology Co.,Ltd	SUR.:N/A	Shielding Angle:N/A

DATA OF LAMP		PHOTOMETRIC DATA Eff: 96.24 lm/W			
MODEL	FEL-C-80W-2	Imax(cd)	3474	S/MH(C0/180)	1.18
NOMINAL POWER(W)	80	LOR(%)	100.0	S/MH(C90/270)	1.18
RATED VOLTAGE(V)	120	TOTAL FLUX(lm)	7856.3	η UP,DN(C0-180)	0.0,49.9
NOMINAL FLUX(lm)	7856.33	CIE CLASS	DIRECT	η UP,DN(C180-360)	0.0,50.1
LAMPS INSIDE	1	η up(%)	0.0	CIBSE SHR NOM	1.25
TEST VOLTAGE(V)	120	η down(%)	100.0	CIBSE SHR MAX	1.30

LUMINOUS INTENSITY DISTRIBUTION DIAGRAM



C0 PLANE ISOLUX DIAGRAM (UNIT:lx)



H(β) Range:-90 - 90DEG  
H(β) Interval: 1.0DEG  
Test Speed: HIGH  
Temperature:25.3DEG  
Operators:CL  
Test Date:09 December 2017

V(B) Range:-80 - 80DEG  
V(B) Interval: 5.0DEG  
Test System:EVERFINE GO-2000A\_V1 SYSTEM V2.0.366  
Humidity:65.0%  
Test Distance:6.010m [K=1.0000]  
Remarks:

## ZONAL FLUX DIAGRAM

### ZONAL FLUX DIAGRAM:

$\gamma$	C0	C45	C90	C135	C180	C225	C270	C315	$\gamma$	$\Phi$ zone	$\Phi$ total	%lum, lamp
10	3404	3385	3395	3373	3393	3372	3390	3382	0- 10	326.6	326.6	4.16, 4.16
20	3171	3142	3147	3128	3154	3128	3144	3142	10- 20	924.5	1251	15.9, 15.9
30	2771	2759	2748	2739	2749	2741	2749	2756	20- 30	1363	2614	33.3, 33.3
40	2146	2236	2194	2204	2129	2214	2205	2233	30- 40	1549	4163	53, 53
50	1582	1593	1503	1565	1567	1587	1523	1594	40- 50	1442	5605	71.3, 71.3
60	1034	978.4	967.3	964.6	1022	984.7	984.2	996.8	50- 60	1137	6742	85.8, 85.8
70	536.1	501.9	489.3	489.2	528.3	507.5	503.2	509.0	60- 70	739.0	7481	95.2, 95.2
80	149.1	144.6	122.8	136.9	148.5	146.8	136.4	146.9	70- 80	332.4	7814	99.5, 99.5
90	1.809	0	0	0	1.497	0	0	0	80- 90	42.65	7856	100, 100
100									90-100			
110									100-110			
120									110-120			
130									120-130			
140									130-140			
150									140-150			
160									150-160			
170									160-170			
180									170-180			
DEG	LUMINOUS INTENSITY:cd									UNIT:lm		

Conical surface Flux(90deg): 4913 lm

%lum = 62.5%

%lamp = 62.5%

Conical surface Flux(120deg): 6742.3 lm

%lum = 85.8%

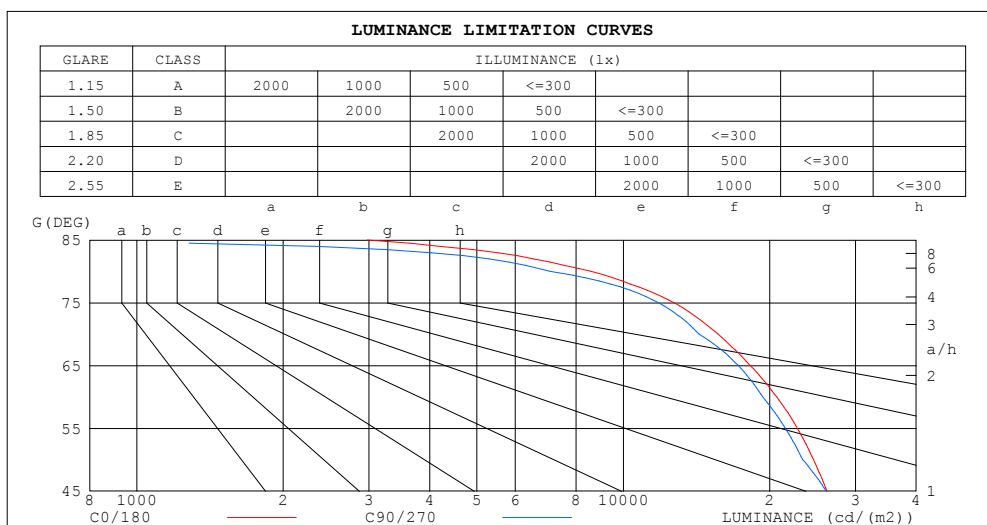
%lamp = 85.8%

H( $\beta$ ) Range:-90 - 90DEG  
 H( $\beta$ ) Interval: 1.0DEG  
 Test Speed: HIGH  
 Temperature:25.3DEG  
 Operators:CL  
 Test Date:09 December 2017

V(B) Range:-80 - 80DEG  
 V(B) Interval: 5.0DEG  
 Test System:EVERFINE GO-2000A\_V1 SYSTEM V2.0.366  
 Humidity:65.0%  
 Test Distance:6.010m [K=1.0000]  
 Remarks:

### LUMINANCE LIMITATION CURVES

Test:U:119.83V I:0.6871A P:81.631W PF:0.9914 Freq:59.98Hz Lamp Flux:7856.33x1 lm		
NAME: LED Explosion-proof Flood Light	TYPE:Floodlight	WEIGHT:N/A
SPEC.:80W/3000K/120°	DIM.: 270*340mm	SERIAL No.:N/A
MFR.: NJZ Lighting Technology Co.,Ltd	SUR.:N/A	Shielding Angle:N/A



LUMINANCE cd/(m2)		
G (DEG)	C0/180	C90/270
85	2973	0
80	8585	7073
75	12722	11826
70	15674	14307
65	18240	17234
60	20670	19346
55	22797	21538
50	24604	23390
45	26240	26148

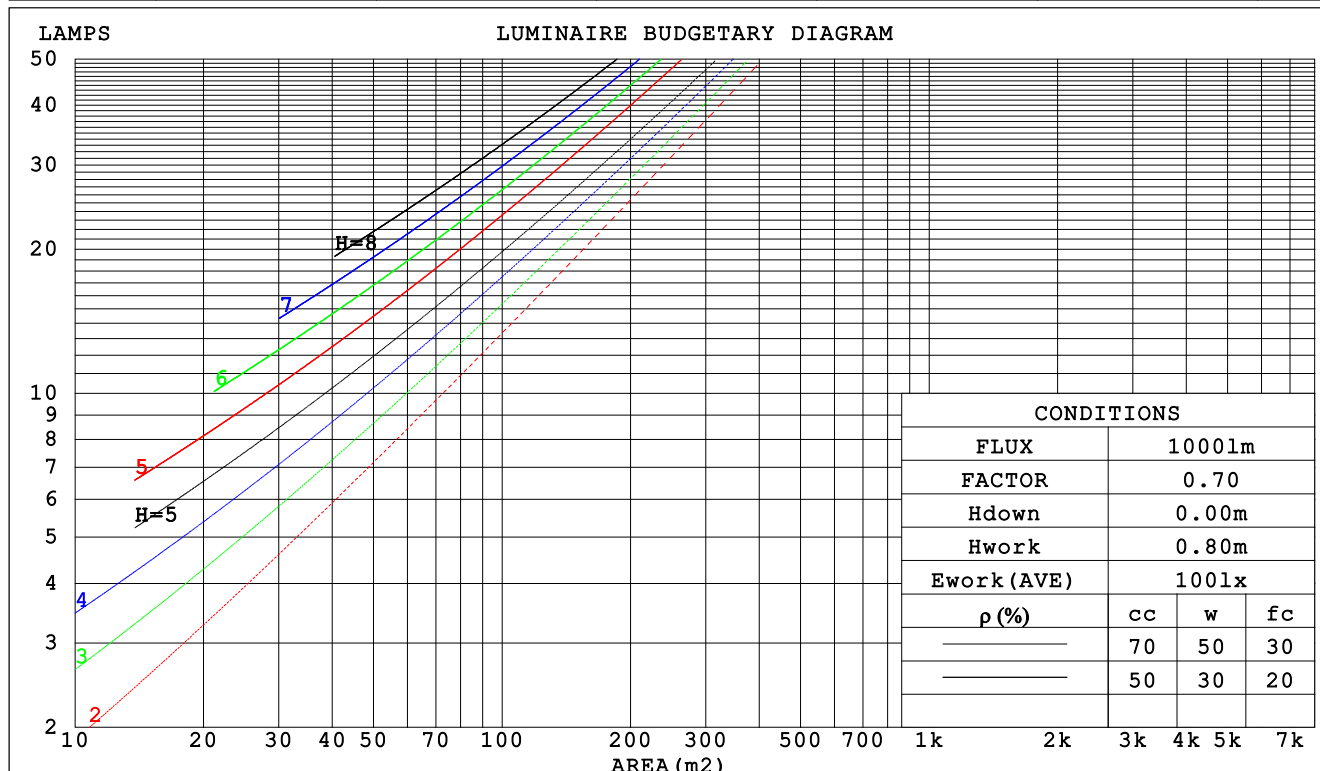
H( $\beta$ ) Range:-90 - 90DEG  
H( $\beta$ ) Interval: 1.0DEG  
Test Speed: HIGH  
Temperature:25.3DEG  
Operators:CL  
Test Date:09 December 2017

V(B) Range:-80 - 80DEG  
V(B) Interval: 5.0DEG  
Test System:EVERFINE GO-2000A\_V1 SYSTEM V2.0.366  
Humidity:65.0%  
Test Distance:6.010m [K=1.0000]  
Remarks:

### CU AND LUMINAIRE BUDGETARY ESTIMATE DIAGRAM

Test:U:119.83V I:0.6871A P:81.631W PF:0.9914 Freq:59.98Hz Lamp Flux:7856.33x1 lm		
NAME: LED Explosion-proof Flood Light	TYPE:Floodlight	WEIGHT:N/A
SPEC.:80W/3000K/120°	DIM.: 270*340mm	SERIAL No.:N/A
MFR.: NJZ Lighting Technology Co.,Ltd	SUR.:N/A	Shielding Angle:N/A

pcc	80%			70%			50%			30%			10%			0
pw	50%	30%	10%	50%	30%	10%	50%	30%	10%	50%	30%	10%	50%	30%	10%	0
pfc	20%			20%			20%			20%			20%			0
RCR	RCR:Room Cavity Ratio						Coefficients of Utilization(CU)									
0.0	1.19	1.19	1.19	1.16	1.16	1.16	1.11	1.11	1.11	1.06	1.06	1.06	1.02	1.02	1.02	.00
1.0	1.06	1.02	.99	1.04	1.00	.97	.90	.97	.94	.96	.93	.91	.92	.90	.89	.87
2.0	.94	.88	.82	.92	.86	.81	.88	.84	.80	.85	.81	.78	.82	.79	.76	.74
3.0	.83	.76	.70	.82	.75	.69	.79	.73	.68	.76	.71	.67	.74	.69	.66	.64
4.0	.74	.66	.60	.73	.66	.60	.71	.64	.59	.68	.63	.58	.66	.61	.57	.55
5.0	.67	.59	.52	.66	.58	.52	.64	.57	.52	.62	.56	.51	.60	.55	.50	.48
6.0	.61	.52	.46	.60	.52	.46	.58	.51	.46	.56	.50	.45	.55	.49	.45	.43
7.0	.55	.47	.41	.54	.47	.41	.53	.46	.41	.52	.45	.40	.50	.45	.40	.38
8.0	.51	.43	.37	.50	.42	.37	.49	.42	.37	.47	.41	.36	.46	.41	.36	.34
9.0	.47	.39	.33	.46	.39	.33	.45	.38	.33	.44	.38	.33	.43	.37	.33	.31
10.0	.43	.36	.31	.43	.35	.30	.42	.35	.30	.41	.35	.30	.40	.34	.30	.28



H( $\beta$ ) Range:-90 - 90DEG  
H( $\beta$ ) Interval: 1.0DEG  
Test Speed: HIGH  
Temperature:25.3DEG  
Operators:CL  
Test Date:09 December 2017

V(B) Range:-80 - 80DEG  
V(B) Interval: 5.0DEG  
Test System:EVERFINE GO-2000A\_V1 SYSTEM V2.0.366  
Humidity:65.0%  
Test Distance:6.010m [K=1.0000]  
Remarks:

### WEC AND CCEC

Test:U:119.83V I:0.6871A P:81.631W PF:0.9914 Freq:59.98Hz Lamp Flux:7856.33x1 lm		
NAME: LED Explosion-proof Flood Light	TYPE:Floodlight	WEIGHT:N/A
SPEC.:80W/3000K/120°	DIM.: 270*340mm	SERIAL No.:N/A
MFR.: NJZ Lighting Technology Co.,Ltd	SUR.:N/A	Shielding Angle:N/A

pcc	80%			70%			50%			30%			10%			0	
pw	50%	30%	10%	50%	30%	10%	50%	30%	10%	50%	30%	10%	50%	30%	10%	0	
pfc	20%			20%			20%			20%			20%			0	
RCR	RCR:Room Cavity Ratio						Wall Exitance Coefficients (WEC)										
0.0																	
1.0	.270	.153	.049	.263	.150	.048	.250	.143	.046	.238	.137	.044	.227	.131	.042		
2.0	.260	.143	.044	.254	.140	.043	.243	.135	.042	.232	.130	.041	.223	.126	.040		
3.0	.245	.130	.039	.240	.128	.039	.230	.125	.038	.220	.121	.037	.212	.117	.036		
4.0	.229	.119	.035	.224	.117	.035	.216	.114	.034	.207	.111	.034	.200	.108	.033		
5.0	.214	.109	.032	.210	.108	.031	.202	.105	.031	.195	.103	.031	.188	.100	.030		
6.0	.200	.100	.029	.196	.099	.029	.189	.097	.028	.183	.095	.028	.177	.093	.028		
7.0	.187	.093	.026	.184	.092	.026	.178	.090	.026	.172	.088	.026	.166	.087	.025		
8.0	.176	.086	.024	.173	.085	.024	.168	.084	.024	.162	.082	.024	.157	.081	.024		
9.0	.166	.080	.022	.163	.080	.022	.158	.078	.022	.153	.077	.022	.149	.076	.022		
10.0	.157	.075	.021	.154	.074	.021	.150	.073	.021	.145	.072	.021	.141	.071	.020		

pcc	80%			70%			50%			30%			10%			0
pw	50%	30%	10%	50%	30%	10%	50%	30%	10%	50%	30%	10%	50%	30%	10%	0
pfc	20%			20%			20%			20%			20%			0
RCR	RCR:Room Cavity Ratio						Ceiling Cavity Exitance Coefficients (CCEC)									
0.0	.190	.190	.190	.163	.163	.163	.111	.111	.111	.064	.064	.064	.020	.020	.020	
1.0	.178	.156	.138	.152	.134	.118	.104	.092	.082	.060	.053	.048	.019	.017	.015	
2.0	.168	.132	.102	.144	.114	.088	.099	.079	.061	.057	.046	.036	.018	.015	.012	
3.0	.160	.114	.078	.137	.098	.067	.094	.068	.047	.054	.040	.028	.017	.013	.009	
4.0	.152	.101	.061	.130	.087	.053	.090	.061	.037	.052	.035	.022	.017	.012	.007	
5.0	.145	.090	.050	.124	.078	.043	.086	.054	.030	.050	.032	.018	.016	.010	.006	
6.0	.138	.081	.041	.118	.071	.036	.082	.049	.025	.047	.029	.015	.015	.009	.005	
7.0	.131	.074	.035	.113	.065	.030	.078	.045	.021	.045	.027	.013	.015	.009	.004	
8.0	.125	.069	.030	.108	.060	.026	.074	.042	.019	.043	.025	.011	.014	.008	.004	
9.0	.119	.064	.026	.103	.055	.023	.071	.039	.016	.041	.023	.010	.013	.008	.003	
10.0	.114	.059	.023	.098	.052	.020	.068	.036	.014	.040	.021	.009	.013	.007	.003	

H( $\beta$ ) Range:-90 - 90DEG  
H( $\beta$ ) Interval: 1.0DEG  
Test Speed: HIGH  
Temperature:25.3DEG  
Operators:CL  
Test Date:09 December 2017

V(B) Range:-80 - 80DEG  
V(B) Interval: 5.0DEG  
Test System:EVERFINE GO-2000A\_V1 SYSTEM V2.0.366  
Humidity:65.0%  
Test Distance:6.010m [K=1.0000]  
Remarks:

### UGR(Unified Glare Rating) Table

Test:U:119.83V I:0.6871A P:81.631W PF:0.9914 Freq:59.98Hz Lamp Flux:7856.33x1 lm										
NAME: LED Explosion-proof Flood Light					TYPE:Floodlight			WEIGHT:N/A		
SPEC.:80W/3000K/120°					DIM.: 270*340mm			SERIAL No.:N/A		
MFR.: NJZ Lighting Technology Co.,Ltd					SUR.:N/A			Shielding Angle:N/A		
ceiling/cavity	0.7	0.7	0.5	0.5	0.3	0.7	0.7	0.5	0.5	0.3
walls	0.5	0.3	0.5	0.3	0.3	0.5	0.3	0.5	0.3	0.3
working plane	0.2	0.2	0.2	0.2	0.2	0.2	0.2	0.2	0.2	0.2
Room dimensions	Viewed crosswise					Viewed endwise				
x = 2H y = 2H	16.3	17.7	16.5	17.9	18.1	16.1	17.5	16.3	17.7	17.9
3H	17.3	18.6	17.6	18.8	19.1	17.0	18.3	17.3	18.6	18.8
4H	17.6	18.8	17.9	19.1	19.3	17.3	18.6	17.6	18.8	19.1
6H	17.8	18.9	18.1	19.2	19.4	17.4	18.6	17.8	18.9	19.1
8H	17.8	18.9	18.1	19.1	19.4	17.4	18.5	17.8	18.8	19.1
12H	17.7	18.8	18.1	19.1	19.4	17.4	18.4	17.7	18.7	19.0
4H 2H	16.7	17.9	17.0	18.1	18.4	16.5	17.7	16.8	18.0	18.2
3H	17.8	18.9	18.2	19.2	19.5	17.6	18.7	18.0	19.0	19.3
4H	18.3	19.2	18.6	19.5	19.9	18.0	19.0	18.4	19.3	19.6
6H	18.5	19.3	18.9	19.7	20.0	18.2	19.0	18.6	19.4	19.7
8H	18.5	19.3	18.9	19.7	20.0	18.2	19.0	18.6	19.3	19.7
12H	18.5	19.2	18.9	19.6	20.0	18.1	18.9	18.6	19.3	19.7
8H 4H	18.3	19.1	18.8	19.5	19.9	18.1	18.9	18.5	19.3	19.6
6H	18.6	19.3	19.1	19.7	20.1	18.3	19.0	18.8	19.4	19.8
8H	18.7	19.3	19.1	19.7	20.1	18.4	19.0	18.8	19.4	19.8
12H	18.7	19.2	19.2	19.6	20.1	18.3	18.8	18.8	19.3	19.8
12H 4H	18.3	19.1	18.7	19.4	19.8	18.1	18.8	18.5	19.2	19.6
6H	18.6	19.2	19.1	19.6	20.1	18.3	18.9	18.8	19.3	19.8
8H	18.7	19.2	19.2	19.6	20.1	18.4	18.9	18.9	19.3	19.8
Variations with the observer position at spacings:										
S = 1.0H	+ 0.3 / - 0.4					+ 0.3 / - 0.4				
1.5H	+ 0.1 / - 0.3					+ 0.2 / - 0.3				
2.0H	+ 0.5 / - 0.4					+ 0.5 / - 0.6				

CIE Pub.117, 7856 lm Total Lamp Luminous Flux Correct ( $8\log(F/F_0) = 7.2$ )

H( $\beta$ ) Range:-90 - 90DEG  
H( $\beta$ ) Interval: 1.0DEG  
Test Speed: HIGH  
Temperature:25.3DEG  
Operators:CL  
Test Date:09 December 2017

V(B) Range:-80 - 80DEG  
V(B) Interval: 5.0DEG  
Test System:EVERFINE GO-2000A\_V1 SYSTEM V2.0.366  
Humidity:65.0%  
Test Distance:6.010m [K=1.0000]  
Remarks:

### UTILIZATION FACTORS TABLE

Test:U:119.83V I:0.6871A P:81.631W PF:0.9914 Freq:59.98Hz Lamp Flux:7856.33x1 lm		
NAME: LED Explosion-proof Flood Light	TYPE:Floodlight	WEIGHT:N/A
SPEC.:80W/3000K/120°	DIM.: 270*340mm	SERIAL No.:N/A
MFR.: NJZ Lighting Technology Co.,Ltd	SUR.:N/A	Shielding Angle:N/A

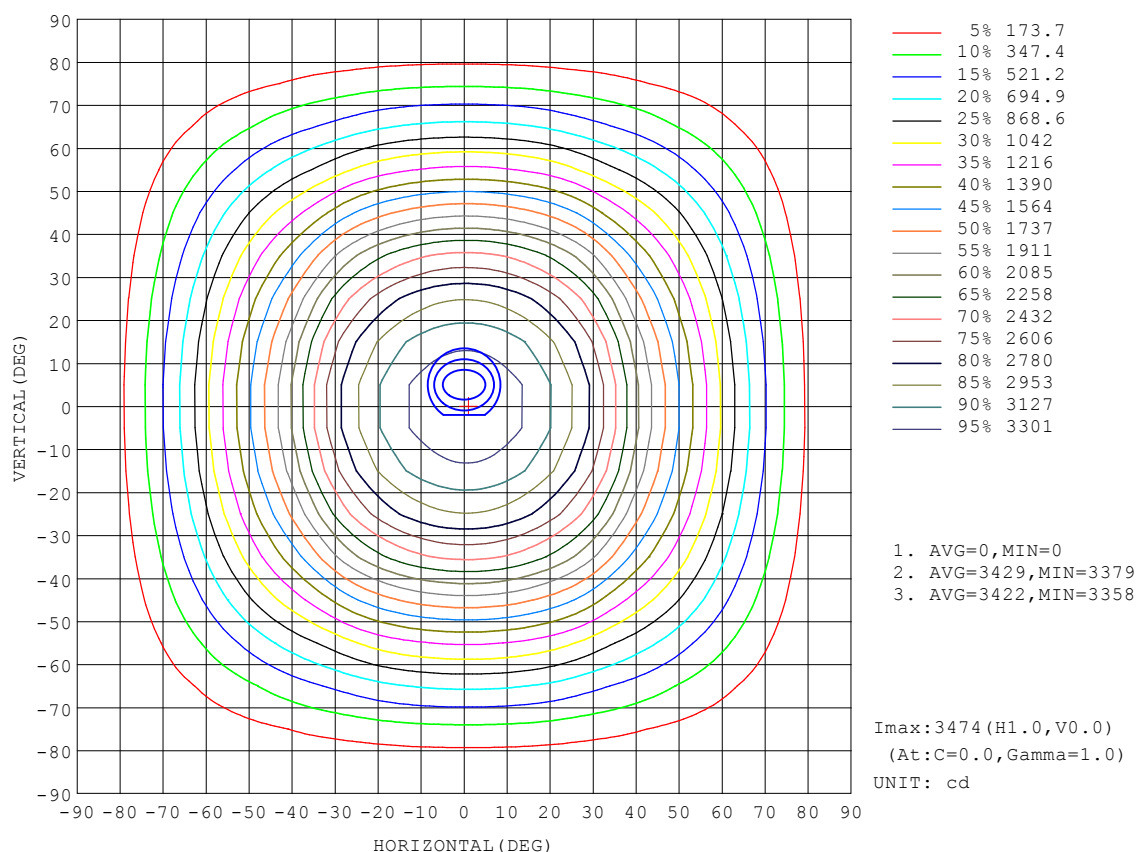
REFLECTANCE										
Ceiling	0.8	0.8	0.8	0.7	0.7	0.7	0.5	0.5	0.5	0
Walls	0.7	0.5	0.3	0.7	0.5	0.3	0.7	0.5	0.3	0
Working plane	0.2	0.2	0.2	0.2	0.2	0.2	0.2	0.2	0.2	0
ROOM INDEX	UTILIZATION FACTORS (PERCENT) $k(RI) \times RCR = 5$									
$k = 0.60$	62	51	45	62	51	45	60	51	45	39
0.80	72	62	55	71	61	55	70	61	54	48
1.00	81	71	64	79	70	64	77	71	63	57
1.25	87	78	72	86	77	71	83	76	70	64
1.50	92	83	77	90	82	77	88	81	76	69
2.00	98	91	85	97	90	84	93	87	83	76
2.50	102	95	90	100	94	89	96	91	87	79
3.00	105	99	94	103	97	93	99	94	91	83
4.00	108	103	99	106	102	98	102	98	95	87
5.00	110	106	103	108	104	101	104	101	98	89
ROOM INDEX	UF (total)									Direct
According to DIN EN 13032-2 2004			Suspended					SHRNM = 1.25		

$H(\beta)$  Range:-90 - 90DEG  
 $H(\beta)$  Interval: 1.0DEG  
 Test Speed: HIGH  
 Temperature:25.3DEG  
 Operators:CL  
 Test Date:09 December 2017

$V(B)$  Range:-80 - 80DEG  
 $V(B)$  Interval: 5.0DEG  
 Test System:EVERFINE GO-2000A\_V1 SYSTEM V2.0.366  
 Humidity:65.0%  
 Test Distance:6.010m [K=1.0000]  
 Remarks:

### ISOCANDELA DIAGRAM

Test:U:119.83V I:0.6871A P:81.631W PF:0.9914 Freq:59.98Hz Lamp Flux:7856.33x1 lm		
NAME: LED Explosion-proof Flood Light	TYPE:Floodlight	WEIGHT:N/A
SPEC.:80W/3000K/120°	DIM.: 270*340mm	SERIAL No.:N/A
MFR.: NJZ Lighting Technology Co.,Ltd	SUR.:N/A	Shielding Angle:N/A



H( $\beta$ ) Range:-90 - 90DEG  
H( $\beta$ ) Interval: 1.0DEG  
Test Speed: HIGH  
Temperature:25.3DEG  
Operators:CL  
Test Date:09 December 2017

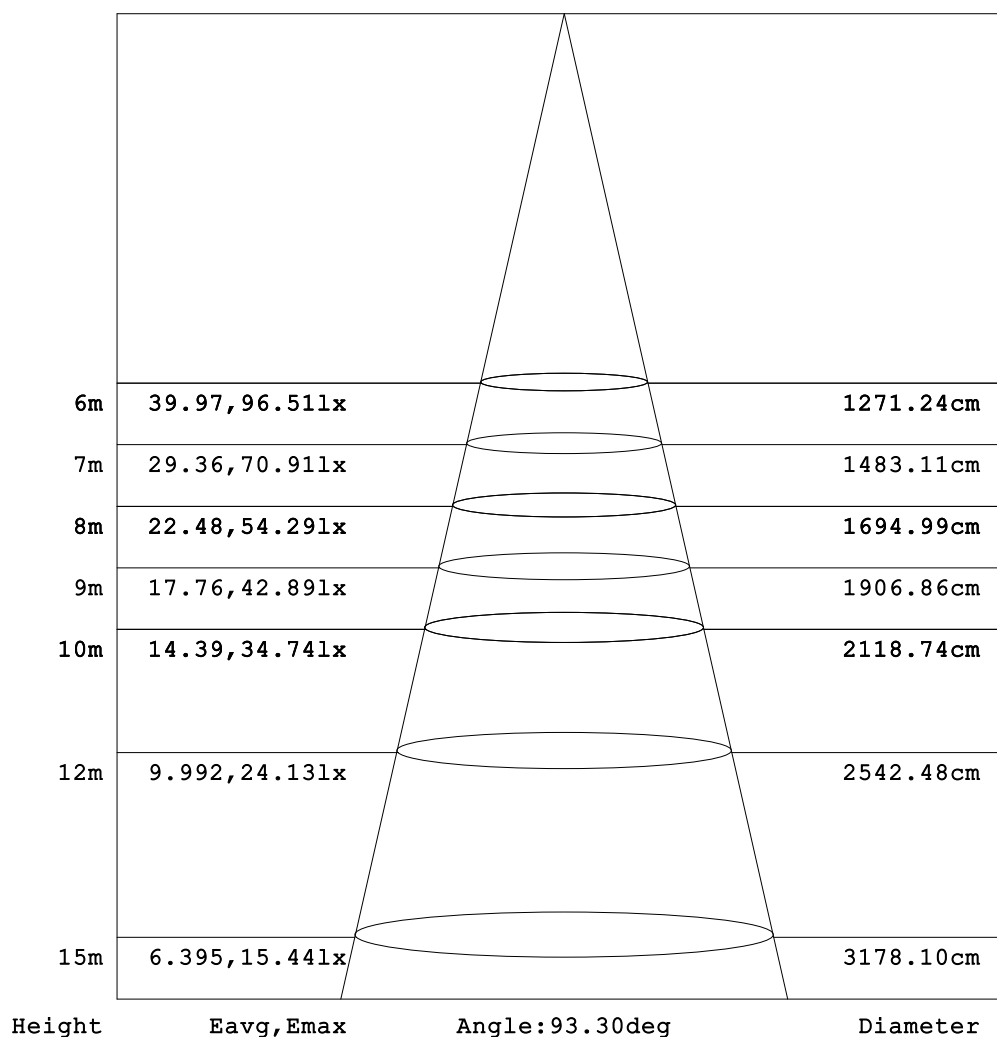
V(B) Range:-80 - 80DEG  
V(B) Interval: 5.0DEG  
Test System:EVERFINE GO-2000A\_V1 SYSTEM V2.0.366  
Humidity:65.0%  
Test Distance:6.010m [K=1.0000]  
Remarks:



### AAI Figure

Test:U:119.83V I:0.6871A P:81.631W PF:0.9914 Freq:59.98Hz Lamp Flux:7856.33x1 lm		
NAME: LED Explosion-proof Flood Light	TYPE:Floodlight	WEIGHT:N/A
SPEC.:80W/3000K/120°	DIM.: 270*340mm	SERIAL No.:N/A
MFR.: NJZ Lighting Technology Co.,Ltd	SUR.:N/A	Shielding Angle:N/A

Flux out:5198 lm



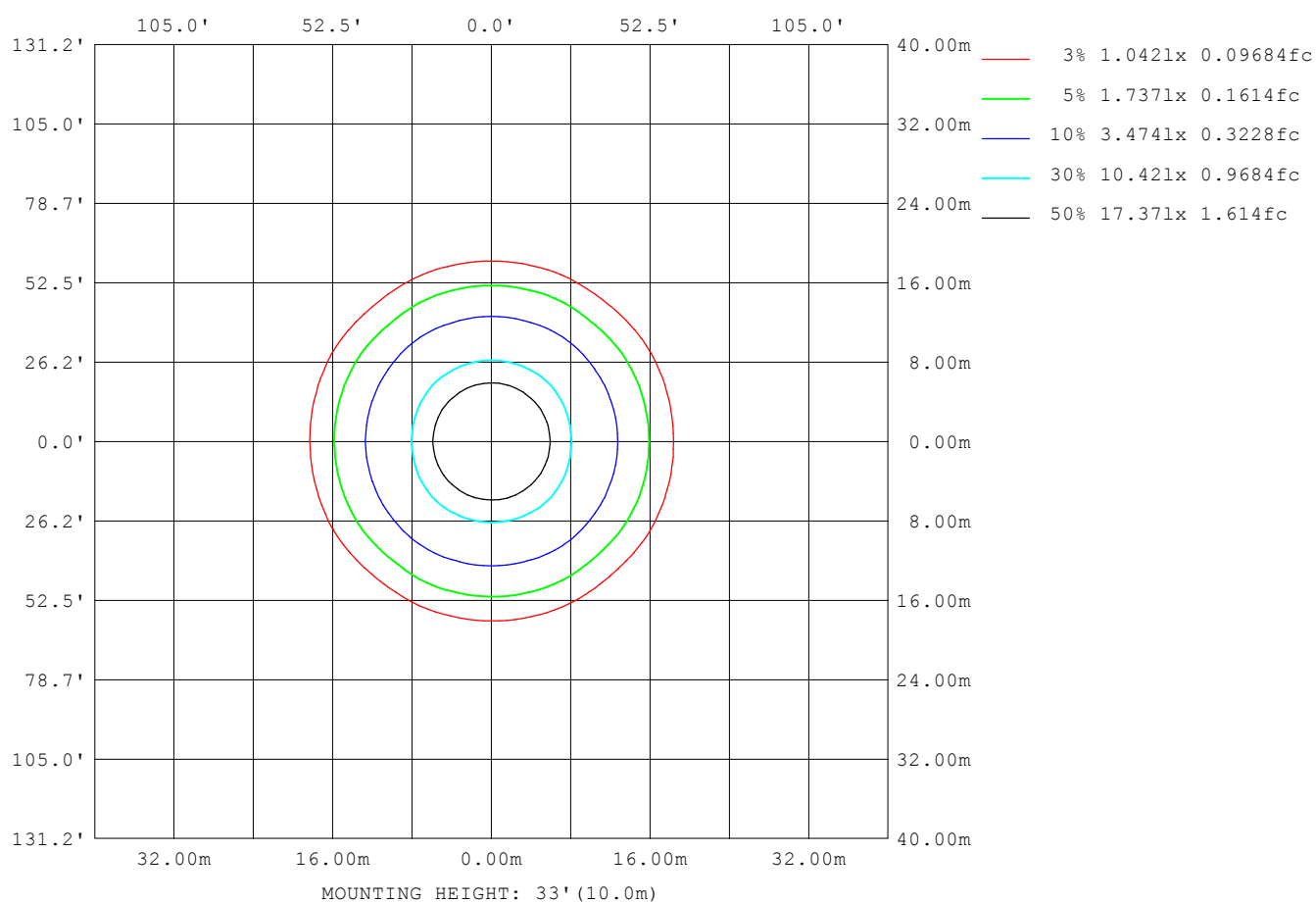
Note: The Curves indicate the illuminated area and the average illumination when the luminaire is at different distance.

H(β) Range: -90 - 90DEG  
H(β) Interval: 1.0DEG  
Test Speed: HIGH  
Temperature: 25.3DEG  
Operators: CL  
Test Date: 09 December 2017

V(B) Range: -80 - 80DEG  
V(B) Interval: 5.0DEG  
Test System: EVERFINE GO-2000A\_V1 SYSTEM V2.0.366  
Humidity: 65.0%  
Test Distance: 6.010m [K=1.0000]  
Remarks:

### ISOLUX DIAGRAM

Test:U:119.83V I:0.6871A P:81.631W PF:0.9914 Freq:59.98Hz Lamp Flux:7856.33x1 lm		
NAME: LED Explosion-proof Flood Light	TYPE:Floodlight	WEIGHT:N/A
SPEC.:80W/3000K/120°	DIM.: 270*340mm	SERIAL No.:N/A
MFR.: NJZ Lighting Technology Co.,Ltd	SUR.:N/A	Shielding Angle:N/A



H( $\beta$ ) Range:-90 - 90DEG  
H( $\beta$ ) Interval: 1.0DEG  
Test Speed: HIGH  
Temperature:25.3DEG  
Operators:CL  
Test Date:09 December 2017

V(B) Range:-80 - 80DEG  
V(B) Interval: 5.0DEG  
Test System:EVERFINE GO-2000A\_V1 SYSTEM V2.0.366  
Humidity:65.0%  
Test Distance:6.010m [K=1.0000]  
Remarks:

### LED Avg.L Report

Test:U:119.83V I:0.6871A P:81.631W PF:0.9914 Freq:59.98Hz Lamp Flux:7856.33x1 lm		
NAME: LED Explosion-proof Flood Light	TYPE:Floodlight	WEIGHT:N/A
SPEC.:80W/3000K/120°	DIM.: 270*340mm	SERIAL No.:N/A
MFR.: NJZ Lighting Technology Co.,Ltd	SUR.:N/A	Shielding Angle:N/A

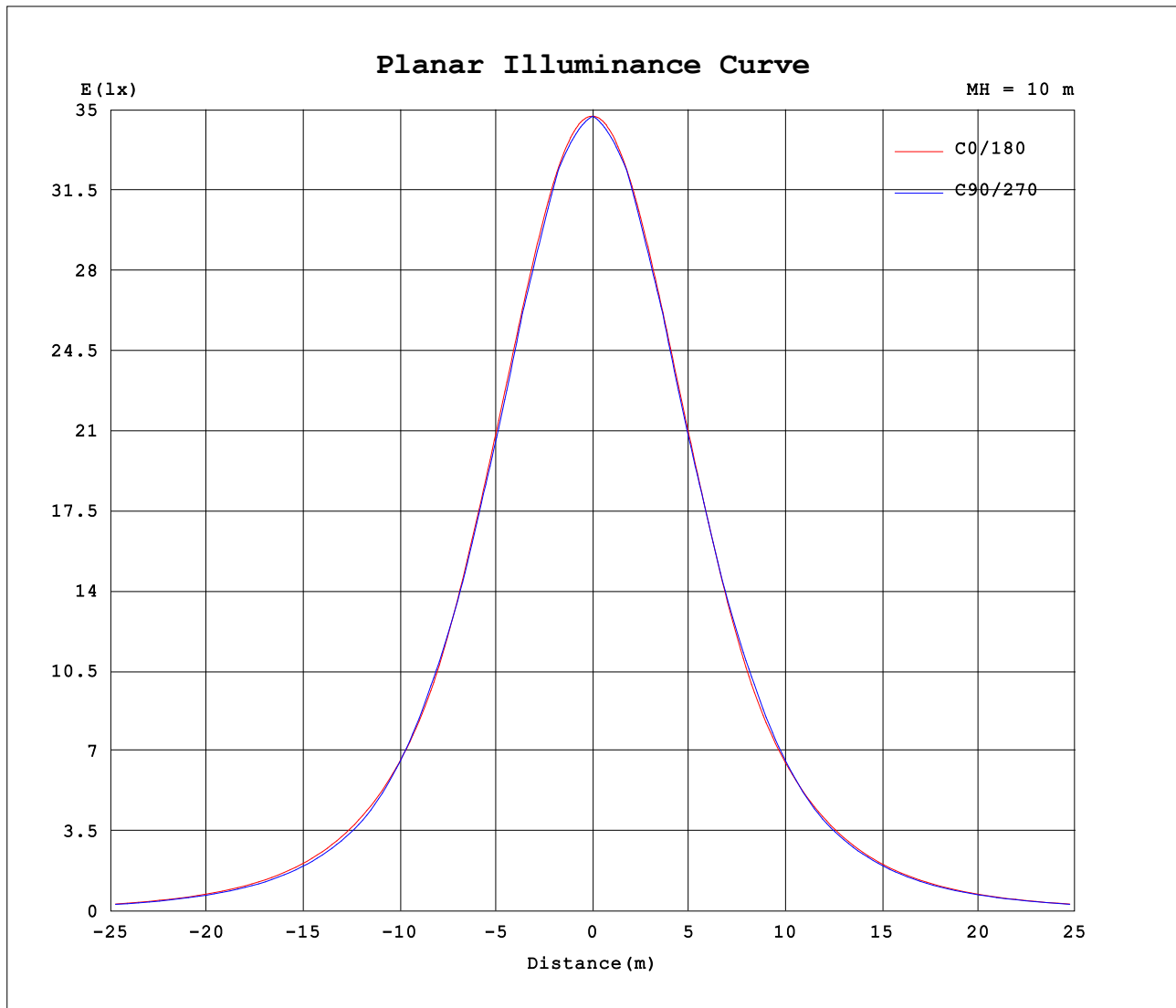
AvgL	cd/m2
L_0~180 (65) av	18106
L_0~180 (75) av	12552
L_0~180 (85) av	3148
L_90~270 (65) av	17416
L_90~270 (75) av	12091
L_90~270 (85) av	0
L_45 (65) av	17282
L_45 (75) av	11561
L_45 (85) av	2761

Standard: GB/T 29293-2012

H(β) Range:-90 - 90DEG  
H(β) Interval: 1.0DEG  
Test Speed: HIGH  
Temperature:25.3DEG  
Operators:CL  
Test Date:09 December 2017

V(B) Range:-80 - 80DEG  
V(B) Interval: 5.0DEG  
Test System:EVERFINE GO-2000A\_V1 SYSTEM V2.0.366  
Humidity:65.0%  
Test Distance:6.010m [K=1.0000]  
Remarks:

### Planar Illuminance Curve



H(β) Range:-90 - 90DEG  
H(β) Interval: 1.0DEG  
Test Speed: HIGH  
Temperature:25.3DEG  
Operators:CL  
Test Date:09 December 2017

V(B) Range:-80 - 80DEG  
V(B) Interval: 5.0DEG  
Test System:EVERFINE GO-2000A\_V1 SYSTEM V2.0.366  
Humidity:65.0%  
Test Distance:6.010m [K=1.0000]  
Remarks:

## LUMINOUS DISTRIBUTION INTENSITY DATA

Test:U:119.83V I:0.6871A P:81.631W PF:0.9914 Freq:59.98Hz Lamp Flux:7856.33x1 lm		
NAME: LED Explosion-proof Flood Light	TYPE:Floodlight	WEIGHT:N/A
SPEC.:80W/3000K/120°	DIM.: 270*340mm	SERIAL No.:N/A
MFR.: NJZ Lighting Technology Co.,Ltd	SUR.:N/A	Shielding Angle:N/A

Table--1

UNIT: cd

[illegible]

```
H( $\beta$ ) Range:-90 - 90DEG
H( $\beta$ ) Interval: 1.0DEG
Test Speed: HIGH
Temperature:25.3DEG
Operators:CL
Test Date:09 December 2017
```

```
V(B) Range:-80 - 80DEG
V(B) Interval: 5.0DEG
Test System:EVERFINE GO-2000A_V1 SYSTEM V2.0.366
Humidity:65.0%
Test Distance:6.010m [K=1.0000]
Remarks:
```

## LUMINOUS DISTRIBUTION INTENSITY DATA

Test:U:119.83V I:0.6871A P:81.631W PF:0.9914 Freq:59.98Hz Lamp Flux:7856.33x1 lm		
NAME: LED Explosion-proof Flood Light	TYPE:Floodlight	WEIGHT:N/A
SPEC.:80W/3000K/120°	DIM.: 270*340mm	SERIAL No.:N/A
MFR.: NJZ Lighting Technology Co.,Ltd	SUR.:N/A	Shielding Angle:N/A

Table--2

UNIT: cd

[illegible]

```
H( $\beta$ ) Range:-90 - 90DEG
H( $\beta$ ) Interval: 1.0DEG
Test Speed: HIGH
Temperature:25.3DEG
Operators:CL
Test Date:09 December 2017
```

```
V(B) Range:-80 - 80DEG
V(B) Interval: 5.0DEG
Test System:EVERFINE GO-2000A_V1 SYSTEM V2.0.366
Humidity:65.0%
Test Distance:6.010m [K=1.0000]
Remarks:
```

## LUMINOUS DISTRIBUTION INTENSITY DATA

Test:U:119.83V I:0.6871A P:81.631W PF:0.9914 Freq:59.98Hz Lamp Flux:7856.33x1 lm		
NAME: LED Explosion-proof Flood Light	TYPE:Floodlight	WEIGHT:N/A
SPEC.:80W/3000K/120°	DIM.: 270*340mm	SERIAL No.:N/A
MFR.: NJZ Lighting Technology Co.,Ltd	SUR.:N/A	Shielding Angle:N/A

Table--3

UNIT: cd

[illegible]

```
H( $\beta$ ) Range:-90 - 90DEG
H( $\beta$ ) Interval: 1.0DEG
Test Speed: HIGH
Temperature:25.3DEG
Operators:CL
Test Date:09 December 2017
```

```
V(B) Range:-80 - 80DEG
V(B) Interval: 5.0DEG
Test System:EVERFINE GO-2000A_V1 SYSTEM V2.0.366
Humidity:65.0%
Test Distance:6.010m [K=1.0000]
Remarks:
```

## LUMINOUS DISTRIBUTION INTENSITY DATA

Test:U:119.83V I:0.6871A P:81.631W PF:0.9914 Freq:59.98Hz Lamp Flux:7856.33x1 lm		
NAME: LED Explosion-proof Flood Light	TYPE:Floodlight	WEIGHT:N/A
SPEC.:80W/3000K/120°	DIM.: 270*340mm	SERIAL No.:N/A
MFR.: NJZ Lighting Technology Co.,Ltd	SUR.:N/A	Shielding Angle:N/A

Table--4

UNIT: cd

[illegible]

```
H( $\beta$ ) Range:-90 - 90DEG
H( $\beta$ ) Interval: 1.0DEG
Test Speed: HIGH
Temperature:25.3DEG
Operators:CL
Test Date:09 December 2017
```

```
V(B) Range:-80 - 80DEG
V(B) Interval: 5.0DEG
Test System:EVERFINE GO-2000A_V1 SYSTEM V2.0.366
Humidity:65.0%
Test Distance:6.010m [K=1.0000]
Remarks:
```