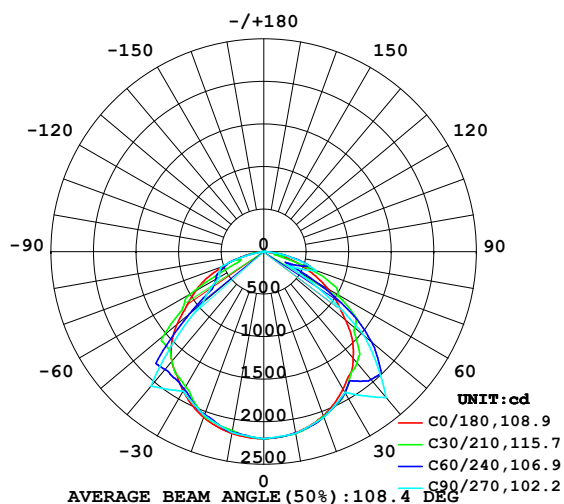


# LUMINAIRE PHOTOMETRIC TEST REPORT

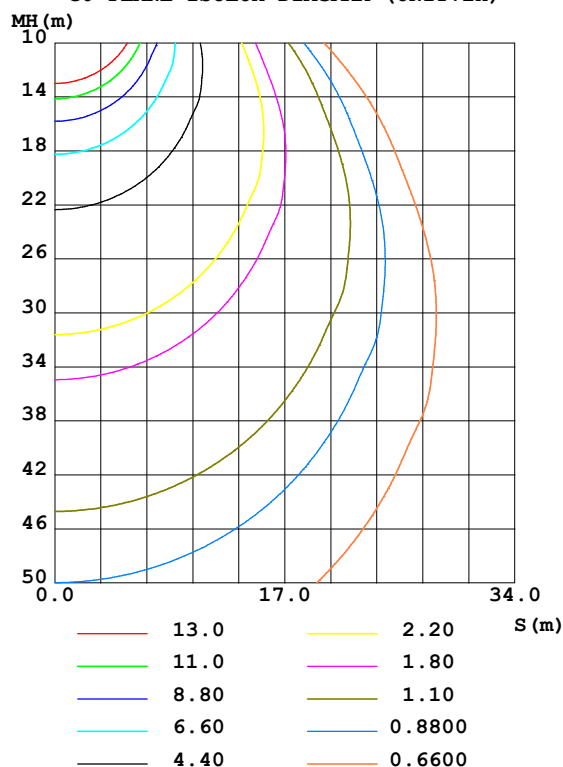
Test:U:120.18V I:0.3800A P:45.463W PF:0.9955 Freq:59.98Hz Lamp Flux:6050.75x1 lm		
NAME: LED Explosion-proof Flood Light	TYPE:Floodlight	WEIGHT:N/A
SPEC.:40W/3000K/110°	DIM.: 125*600mm	SERIAL No.:N/A
MFR.: NJZ Lighting Technology Co.,Ltd	SUR.:N/A	Shielding Angle:N/A

DATA OF LAMP		PHOTOMETRIC DATA Eff: 133.09 lm/W			
MODEL	FEL-E-40-49	Imax(cd)	2239	S/MH(C0/180)	1.28
NOMINAL POWER(W)	40	LOR(%)	100.0	S/MH(C90/270)	1.38
RATED VOLTAGE(V)	120	TOTAL FLUX(lm)	6050.8	$\eta$ UP,DN(C0-180)	0.0,51.6
NOMINAL FLUX(lm)	6050.75	CIE CLASS	DIRECT	$\eta$ UP,DN(C180-360)	0.0,48.4
LAMPS INSIDE	1	$\eta$ up(%)	0.0	CIBSE SHR NOM	1.50
TEST VOLTAGE(V)	120	$\eta$ down(%)	100.0	CIBSE SHR MAX	1.50

LUMINOUS INTENSITY DISTRIBUTION DIAGRAM



C0 PLANE ISOLUX DIAGRAM (UNIT:lx)



H( $\beta$ ) Range:-90 - 90DEG  
H( $\beta$ ) Interval: 1.0DEG  
Test Speed: HIGH  
Temperature:25.3DEG  
Operators:CL  
Test Date:04 December 2017

V(B) Range:-80 - 80DEG  
V(B) Interval: 5.0DEG  
Test System:EVERFINE GO-2000A\_V1 SYSTEM V2.0.366  
Humidity:65.0%  
Test Distance:6.010m [K=1.0000]  
Remarks:

## ZONAL FLUX DIAGRAM

### ZONAL FLUX DIAGRAM:

$\gamma$	C0	C45	C90	C135	C180	C225	C270	C315	$\gamma$	$\Phi$ zone	$\Phi$ total	%lum, lamp
10	2160	2164	2168	2154	2169	2145	2158	2156	0- 10	207.5	207.5	3.43,3.43
20	2052	2076	2070	2037	2071	2020	2048	2059	10- 20	596.5	804.0	13.3,13.3
30	1865	1902	1910	1885	1893	1870	1893	1879	20- 30	910.7	1715	28.3,28.3
40	1635	1737	2239	1731	1682	1728	2062	1731	30- 40	1157	2872	47.5,47.5
50	1259	1647	1544	1674	1331	1519	936.1	1485	40- 50	1260	4132	68.3,68.3
60	869.4	1049	314.7	970.2	925.3	576.8	601.0	705.0	50- 60	954.8	5087	84.1,84.1
70	458.8	286.2	660.8	262.9	507.8	456.0	542.2	267.2	60- 70	583.7	5670	93.7,93.7
80	86.11	269.5	244.1	190.5	130.2	117.2	18.65	155.8	70- 80	332.5	6003	99.2,99.2
90	3.612	0	0	0	3.568	0	0	0	80- 90	47.92	6051	100,100
100									90-100			
110									100-110			
120									110-120			
130									120-130			
140									130-140			
150									140-150			
160									150-160			
170									160-170			
180									170-180			
DEG	LUMINOUS INTENSITY:cd									UNIT:lm		

Conical surface Flux(90deg): 3519.2 lm

%lum = 58.2%

%lamp = 58.2%

Conical surface Flux(120deg): 5086.6 lm

%lum = 84.1%

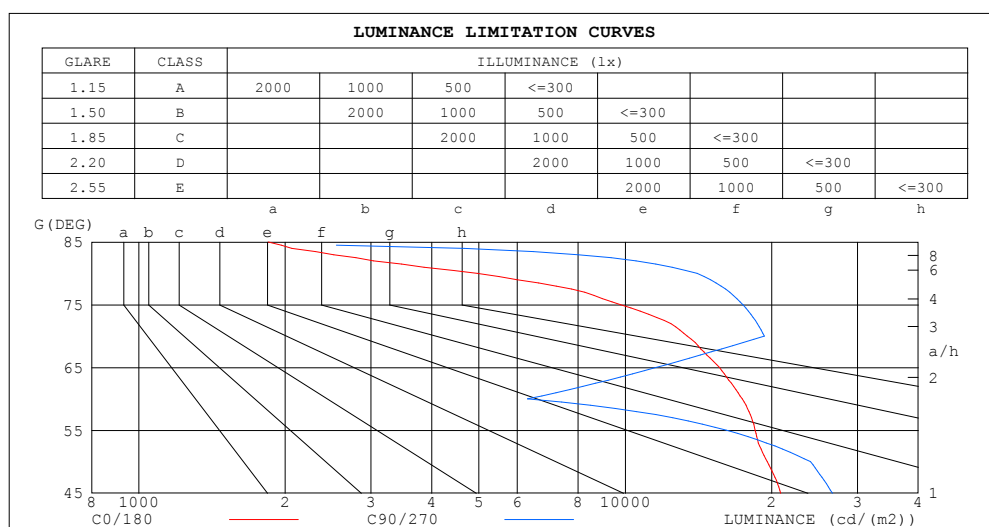
%lamp = 84.1%

H( $\beta$ ) Range:-90 - 90DEG  
H( $\beta$ ) Interval: 1.0DEG  
Test Speed: HIGH  
Temperature:25.3DEG  
Operators:CL  
Test Date:04 December 2017

V(B) Range:-80 - 80DEG  
V(B) Interval: 5.0DEG  
Test System:EVERFINE GO-2000A\_V1 SYSTEM V2.0.366  
Humidity:65.0%  
Test Distance:6.010m [K=1.0000]  
Remarks:

### LUMINANCE LIMITATION CURVES

Test:U:120.18V I:0.3800A P:45.463W PF:0.9955 Freq:59.98Hz Lamp Flux:6050.75x1 lm		
NAME: LED Explosion-proof Flood Light	TYPE:Floodlight	WEIGHT:N/A
SPEC.:40W/3000K/110°	DIM.: 125*600mm	SERIAL No.:N/A
MFR.: NJZ Lighting Technology Co.,Ltd	SUR.:N/A	Shielding Angle:N/A



LUMINANCE cd/(m2)		
G (DEG)	C0/180	C90/270
85	1844	0
80	4959	14057
75	9778	17459
70	13416	19319
65	15616	11550
60	17389	6293
55	18497	16162
50	19586	24021
45	20856	26660

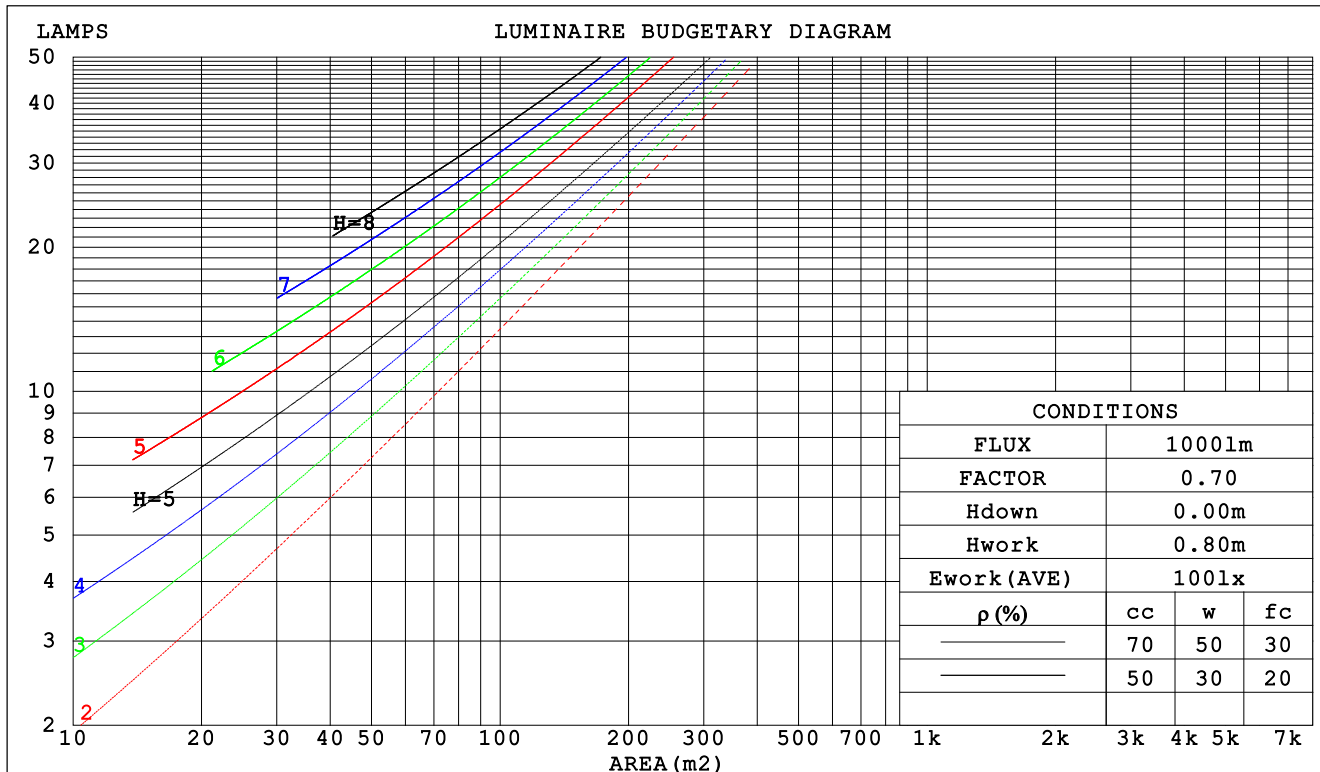
H( $\beta$ ) Range:-90 - 90DEG  
H( $\beta$ ) Interval: 1.0DEG  
Test Speed: HIGH  
Temperature:25.3DEG  
Operators:CL  
Test Date:04 December 2017

V(B) Range:-80 - 80DEG  
V(B) Interval: 5.0DEG  
Test System:EVERFINE GO-2000A\_V1 SYSTEM V2.0.366  
Humidity:65.0%  
Test Distance:6.010m [K=1.0000]  
Remarks:

### CU AND LUMINAIRE BUDGETARY ESTIMATE DIAGRAM

Test:U:120.18V I:0.3800A P:45.463W PF:0.9955 Freq:59.98Hz Lamp Flux:6050.75x1 lm		
NAME: LED Explosion-proof Flood Light	TYPE:Floodlight	WEIGHT:N/A
SPEC.:40W/3000K/110°	DIM.: 125*600mm	SERIAL No.:N/A
MFR.: NJZ Lighting Technology Co.,Ltd	SUR.:N/A	Shielding Angle:N/A

pcc	80%			70%			50%			30%			10%			0
p <sub>w</sub>	50%	30%	10%	50%	30%	10%	50%	30%	10%	50%	30%	10%	50%	30%	10%	0
p <sub>fc</sub>	20%			20%			20%			20%			20%			0
RCR	RCR:Room Cavity Ratio						Coefficients of Utilization(CU)									
0.0	1.19	1.19	1.19	1.16	1.16	1.16	1.11	1.11	1.11	1.06	1.06	1.06	1.02	1.02	1.02	1.00
1.0	1.05	1.01	.98	1.03	.99	.96	.99	.96	.93	.95	.92	.90	.91	.89	.88	.85
2.0	.92	.86	.80	.90	.85	.80	.87	.82	.78	.84	.80	.76	.81	.77	.74	.72
3.0	.81	.74	.67	.80	.73	.67	.77	.71	.66	.74	.69	.65	.72	.67	.63	.61
4.0	.72	.64	.57	.71	.63	.57	.69	.62	.56	.66	.60	.55	.64	.59	.55	.53
5.0	.65	.56	.50	.64	.55	.49	.62	.54	.49	.60	.53	.48	.58	.52	.48	.46
6.0	.58	.50	.43	.57	.49	.43	.56	.48	.43	.54	.47	.42	.52	.47	.42	.40
7.0	.53	.44	.38	.52	.44	.38	.51	.43	.38	.49	.43	.38	.48	.42	.37	.35
8.0	.48	.40	.34	.48	.40	.34	.46	.39	.34	.45	.38	.34	.44	.38	.33	.31
9.0	.44	.36	.31	.44	.36	.31	.42	.35	.30	.41	.35	.30	.40	.34	.30	.28
10.0	.41	.33	.28	.40	.33	.28	.39	.32	.28	.38	.32	.27	.37	.32	.27	.26



H( $\beta$ ) Range:-90 - 90DEG  
H( $\beta$ ) Interval: 1.0DEG  
Test Speed: HIGH  
Temperature:25.3DEG  
Operators:CL  
Test Date:04 December 2017

V(B) Range:-80 - 80DEG  
V(B) Interval: 5.0DEG  
Test System:EVERFINE GO-2000A\_V1 SYSTEM V2.0.366  
Humidity:65.0%  
Test Distance:6.010m [K=1.0000]  
Remarks:

### WEC AND CCEC

Test:U:120.18V I:0.3800A P:45.463W PF:0.9955 Freq:59.98Hz Lamp Flux:6050.75x1 lm		
NAME: LED Explosion-proof Flood Light	TYPE:Floodlight	WEIGHT:N/A
SPEC.:40W/3000K/110°	DIM.: 125*600mm	SERIAL No.:N/A
MFR.: NJZ Lighting Technology Co.,Ltd	SUR.:N/A	Shielding Angle:N/A

pcc	80%			70%			50%			30%			10%			0	
pw	50%	30%	10%	50%	30%	10%	50%	30%	10%	50%	30%	10%	50%	30%	10%	0	
pfc	20%			20%			20%			20%			20%			0	
RCR	RCR:Room Cavity Ratio						Wall Exitance Coefficients (WEC)										
0.0																	
1.0	.285	.162	.051	.278	.158	.050	.265	.152	.048	.253	.146	.047	.241	.140	.045		
2.0	.274	.150	.046	.268	.147	.045	.256	.142	.044	.245	.138	.043	.236	.133	.042		
3.0	.257	.137	.041	.251	.134	.040	.241	.131	.040	.231	.127	.039	.223	.123	.038		
4.0	.239	.124	.037	.234	.123	.036	.225	.119	.036	.217	.116	.035	.209	.114	.035		
5.0	.223	.113	.033	.218	.112	.033	.210	.109	.032	.203	.107	.032	.196	.105	.031		
6.0	.208	.104	.030	.204	.103	.030	.197	.101	.029	.190	.099	.029	.184	.097	.029		
7.0	.194	.096	.027	.191	.095	.027	.184	.093	.027	.178	.091	.027	.173	.090	.026		
8.0	.182	.089	.025	.179	.088	.025	.173	.087	.025	.168	.085	.025	.163	.084	.024		
9.0	.171	.083	.023	.168	.082	.023	.163	.081	.023	.158	.079	.023	.154	.078	.023		
10.0	.161	.077	.021	.159	.077	.021	.154	.076	.021	.150	.074	.021	.146	.073	.021		

pcc	80%			70%			50%			30%			10%			0
pw	50%	30%	10%	50%	30%	10%	50%	30%	10%	50%	30%	10%	50%	30%	10%	0
pfc	20%			20%			20%			20%			20%			0
RCR	RCR:Room Cavity Ratio						Ceiling Cavity Exitance Coefficients (CCEC)									
0.0	.190	.190	.190	.163	.163	.163	.111	.111	.111	.064	.064	.064	.020	.020	.020	
1.0	.179	.156	.136	.153	.134	.117	.105	.092	.081	.060	.053	.047	.019	.017	.015	
2.0	.170	.132	.100	.145	.114	.087	.100	.079	.060	.057	.046	.035	.018	.015	.012	
3.0	.162	.114	.076	.139	.099	.066	.095	.068	.046	.055	.040	.027	.018	.013	.009	
4.0	.154	.101	.060	.132	.087	.052	.091	.061	.037	.053	.036	.022	.017	.012	.007	
5.0	.147	.090	.048	.126	.078	.042	.087	.055	.030	.050	.032	.018	.016	.010	.006	
6.0	.140	.082	.040	.121	.071	.035	.083	.050	.025	.048	.029	.015	.016	.010	.005	
7.0	.134	.075	.034	.115	.065	.029	.079	.046	.021	.046	.027	.012	.015	.009	.004	
8.0	.127	.069	.029	.110	.060	.025	.076	.042	.018	.044	.025	.011	.014	.008	.004	
9.0	.122	.064	.026	.105	.056	.022	.073	.039	.016	.042	.023	.009	.014	.008	.003	
10.0	.116	.060	.023	.100	.052	.020	.069	.037	.014	.040	.022	.008	.013	.007	.003	

H( $\beta$ ) Range:-90 - 90DEG  
H( $\beta$ ) Interval: 1.0DEG  
Test Speed: HIGH  
Temperature:25.3DEG  
Operators:CL  
Test Date:04 December 2017

V(B) Range:-80 - 80DEG  
V(B) Interval: 5.0DEG  
Test System:EVERFINE GO-2000A\_V1 SYSTEM V2.0.366  
Humidity:65.0%  
Test Distance:6.010m [K=1.0000]  
Remarks:

### UGR(Unified Glare Rating) Table

Test:U:120.18V I:0.3800A P:45.463W PF:0.9955 Freq:59.98Hz Lamp Flux:6050.75x1 lm										
NAME: LED Explosion-proof Flood Light					TYPE:Floodlight			WEIGHT:N/A		
SPEC.:40W/3000K/110°					DIM.: 125*600mm			SERIAL No.:N/A		
MFR.: NJZ Lighting Technology Co.,Ltd					SUR.:N/A			Shielding Angle:N/A		
ceiling/cavity	0.7	0.7	0.5	0.5	0.3	0.7	0.7	0.5	0.5	0.3
walls	0.5	0.3	0.5	0.3	0.3	0.5	0.3	0.5	0.3	0.3
working plane	0.2	0.2	0.2	0.2	0.2	0.2	0.2	0.2	0.2	0.2
Room dimensions	Viewed crosswise					Viewed endwise				
x = 2H y = 2H	17.5	18.9	17.7	19.1	19.3	16.5	17.9	16.7	18.1	18.3
3H	18.7	20.1	19.0	20.3	20.5	17.9	19.2	18.2	19.5	19.7
4H	19.1	20.4	19.4	20.6	20.9	18.8	20.1	19.1	20.3	20.6
6H	19.2	20.4	19.6	20.7	21.0	19.3	20.5	19.6	20.8	21.1
8H	19.2	20.4	19.5	20.6	20.9	19.4	20.6	19.7	20.9	21.1
12H	19.2	20.3	19.5	20.6	20.9	19.4	20.5	19.7	20.8	21.1
4H 2H	17.9	19.2	18.2	19.4	19.7	16.9	18.2	17.2	18.4	18.7
3H	19.2	20.4	19.6	20.7	21.0	18.6	19.7	19.0	20.0	20.3
4H	19.7	20.7	20.0	21.0	21.3	19.7	20.7	20.1	21.0	21.4
6H	19.9	20.8	20.3	21.1	21.5	20.4	21.3	20.8	21.6	22.0
8H	19.9	20.7	20.3	21.1	21.5	20.5	21.3	20.9	21.7	22.1
12H	19.9	20.6	20.3	21.0	21.4	20.5	21.3	20.9	21.6	22.1
8H 4H	19.9	20.8	20.3	21.1	21.5	20.0	20.8	20.4	21.2	21.6
6H	20.3	21.0	20.8	21.4	21.9	20.8	21.5	21.3	21.9	22.3
8H	20.5	21.1	20.9	21.5	21.9	21.0	21.6	21.5	22.0	22.5
12H	20.5	21.0	21.0	21.5	22.0	21.0	21.5	21.5	22.0	22.4
12H 4H	20.0	20.7	20.4	21.1	21.5	20.0	20.8	20.4	21.2	21.6
6H	20.4	21.0	20.9	21.5	21.9	20.9	21.5	21.3	21.9	22.4
8H	20.6	21.1	21.1	21.6	22.0	21.1	21.6	21.6	22.1	22.5
Variations with the observer position at spacings:										
S = 1.0H	+ 0.2 / - 0.3					+ 0.2 / - 0.2				
1.5H	+ 0.7 / - 1.2					+ 0.4 / - 0.8				
2.0H	+ 1.0 / - 1.5					+ 1.1 / - 2.0				

CIE Pub.117, 6051 lm Total Lamp Luminous Flux Correct (8log(F/F0) = 6.3)

H( $\beta$ ) Range:-90 - 90DEG  
H( $\beta$ ) Interval: 1.0DEG  
Test Speed: HIGH  
Temperature:25.3DEG  
Operators:CL  
Test Date:04 December 2017

V(B) Range:-80 - 80DEG  
V(B) Interval: 5.0DEG  
Test System:EVERFINE GO-2000A\_V1 SYSTEM V2.0.366  
Humidity:65.0%  
Test Distance:6.010m [K=1.0000]  
Remarks:

### UTILIZATION FACTORS TABLE

Test:U:120.18V I:0.3800A P:45.463W PF:0.9955 Freq:59.98Hz Lamp Flux:6050.75x1 lm		
NAME: LED Explosion-proof Flood Light	TYPE:Floodlight	WEIGHT:N/A
SPEC.:40W/3000K/110°	DIM.: 125*600mm	SERIAL No.:N/A
MFR.: NJZ Lighting Technology Co.,Ltd	SUR.:N/A	Shielding Angle:N/A

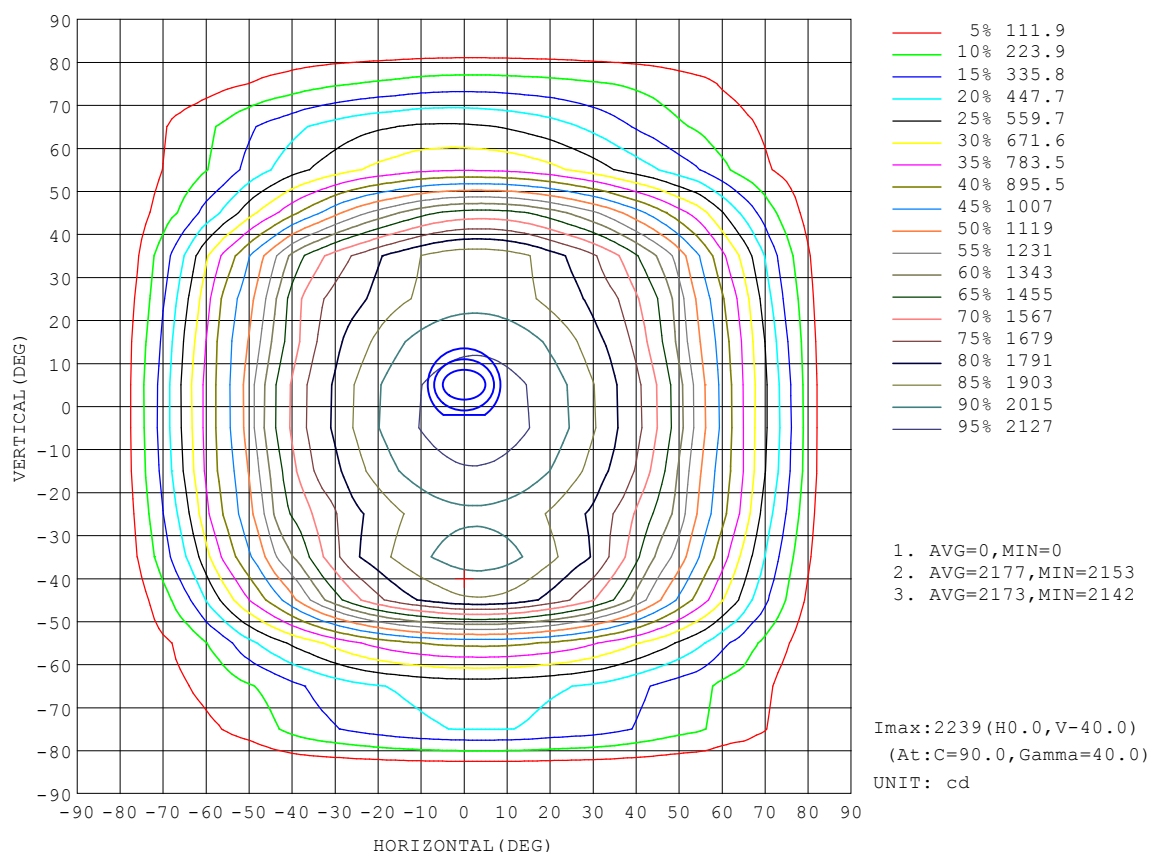
REFLECTANCE										
Ceiling	0.8	0.8	0.8	0.7	0.7	0.7	0.5	0.5	0.5	0
Walls	0.7	0.5	0.3	0.7	0.5	0.3	0.7	0.5	0.3	0
Working plane	0.2	0.2	0.2	0.2	0.2	0.2	0.2	0.2	0.2	0
ROOM INDEX	UTILIZATION FACTORS (PERCENT) $k(RI) \times RCR = 5$									
$k = 0.60$	59	47	41	58	47	40	57	47	40	34
0.80	69	58	51	68	58	51	66	57	50	44
1.00	78	67	60	77	67	60	75	68	60	53
1.25	85	75	68	84	75	68	81	73	67	60
1.50	90	81	74	89	80	74	86	78	73	65
2.00	97	89	83	95	88	82	92	85	81	73
2.50	100	93	88	98	92	87	95	89	85	77
3.00	104	97	92	101	96	91	98	93	89	81
4.00	107	102	98	105	100	96	101	97	94	85
5.00	109	105	101	107	103	100	103	99	97	88
ROOM INDEX	UF (total)									Direct
According to DIN EN 13032-2 2004			Suspended					SHRNOM = 1.25		

$H(\beta)$  Range:-90 - 90DEG  
 $H(\beta)$  Interval: 1.0DEG  
 Test Speed: HIGH  
 Temperature:25.3DEG  
 Operators:CL  
 Test Date:04 December 2017

$V(B)$  Range:-80 - 80DEG  
 $V(B)$  Interval: 5.0DEG  
 Test System:EVERFINE GO-2000A\_V1 SYSTEM V2.0.366  
 Humidity:65.0%  
 Test Distance:6.010m [K=1.0000]  
 Remarks:

# ISOCANDELA DIAGRAM

Test:U:120.18V I:0.3800A P:45.463W PF:0.9955 Freq:59.98Hz Lamp Flux:6050.75x1 lm		
NAME: LED Explosion-proof Flood Light	TYPE:Floodlight	WEIGHT:N/A
SPEC.:40W/3000K/110°	DIM.: 125*600mm	SERIAL No.:N/A
MFR.: NJZ Lighting Technology Co.,Ltd	SUR.:N/A	Shielding Angle:N/A



H( $\beta$ ) Range:-90 - 90DEG  
H( $\beta$ ) Interval: 1.0DEG  
Test Speed: HIGH  
Temperature:25.3DEG  
Operators:CL  
Test Date:04 December 2017

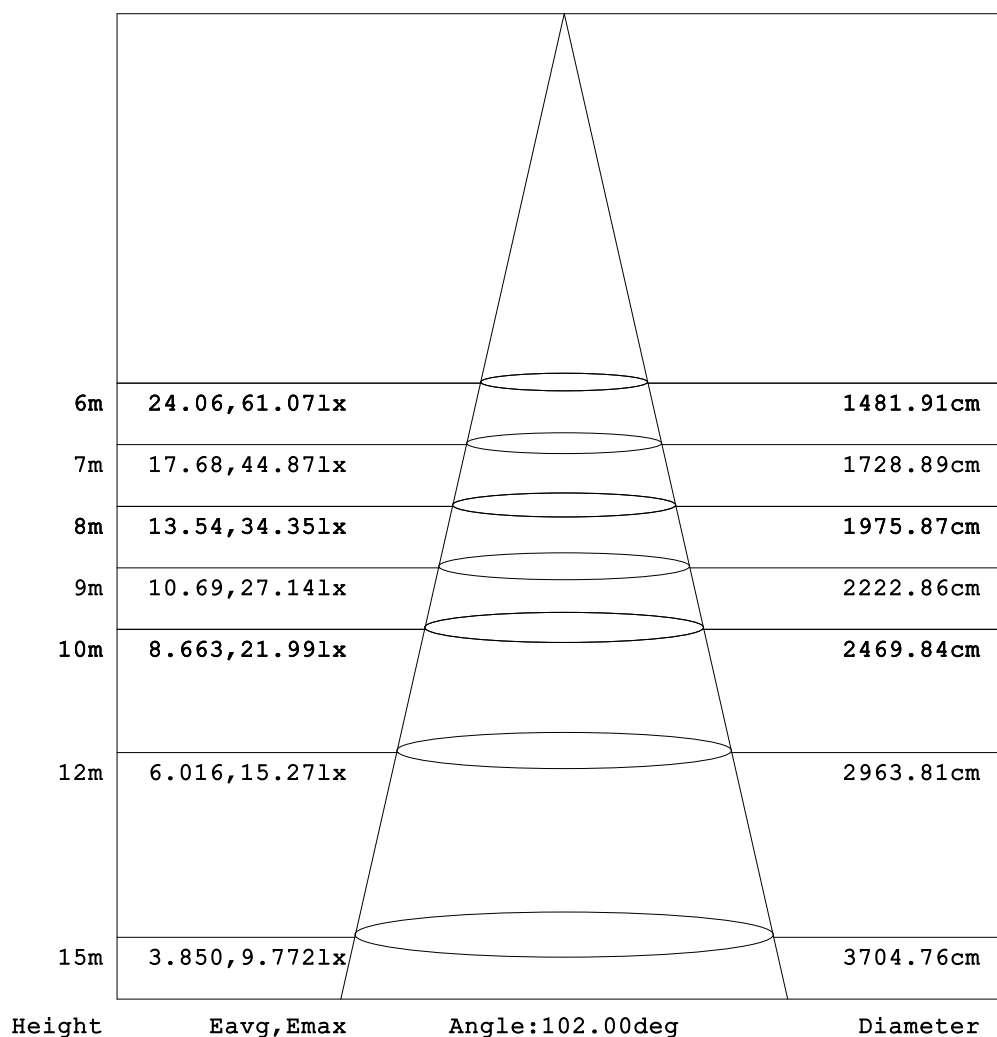
V(B) Range:-80 - 80DEG  
V(B) Interval: 5.0DEG  
Test System:EVERFINE GO-2000A\_V1 SYSTEM V2.0.366  
Humidity:65.0%  
Test Distance:6.010m [K=1.0000]  
Remarks:



### AAI Figure

Test:U:120.18V I:0.3800A P:45.463W PF:0.9955 Freq:59.98Hz Lamp Flux:6050.75x1 lm		
NAME: LED Explosion-proof Flood Light	TYPE:Floodlight	WEIGHT:N/A
SPEC.:40W/3000K/110°	DIM.: 125*600mm	SERIAL No.:N/A
MFR.: NJZ Lighting Technology Co.,Ltd	SUR.:N/A	Shielding Angle:N/A

Flux out:4301 lm



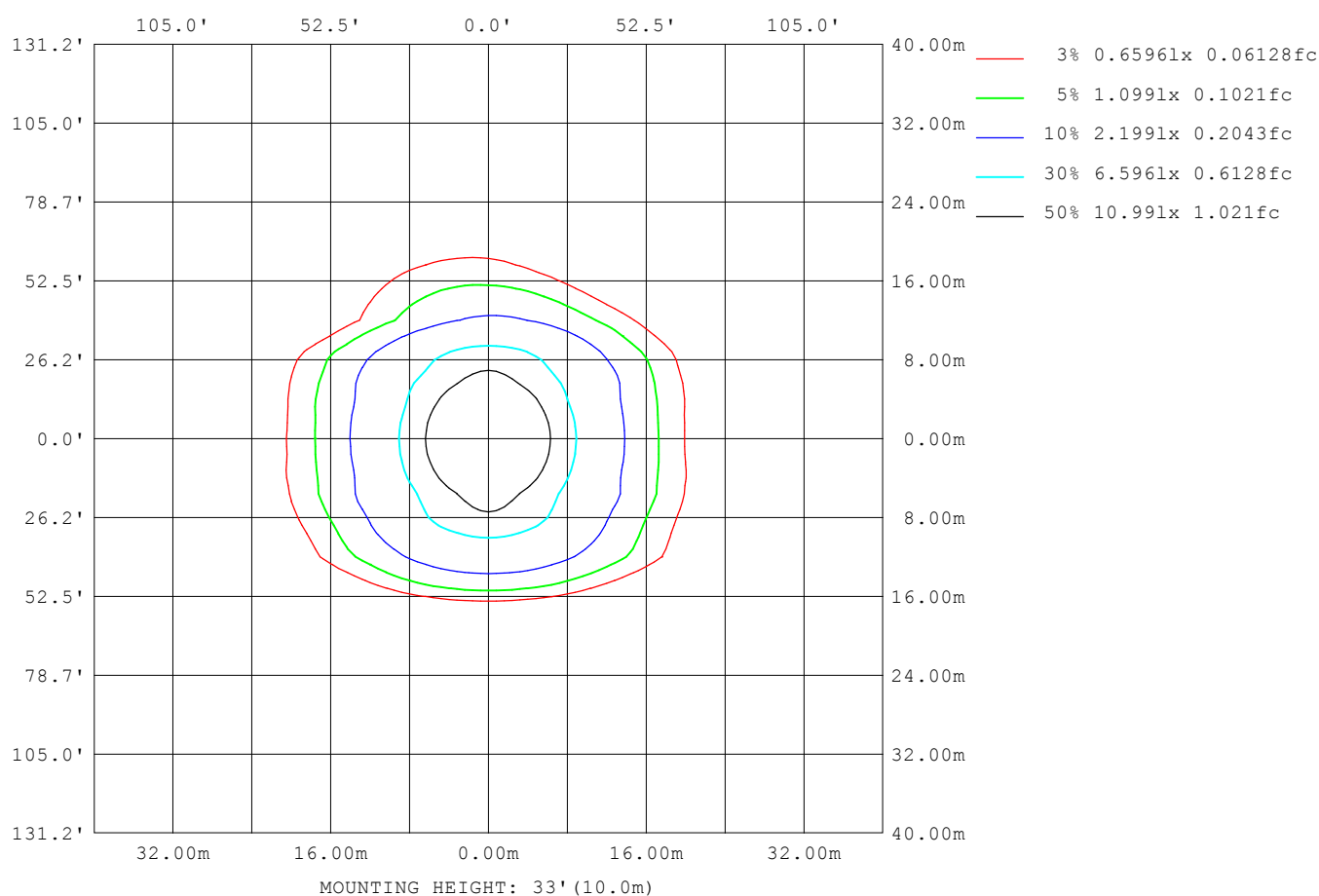
Note:The Curves indicate the illuminated area and the average illumination when the luminaire is at different distance.

H(β) Range:-90 - 90DEG  
H(β) Interval: 1.0DEG  
Test Speed: HIGH  
Temperature:25.3DEG  
Operators:CL  
Test Date:04 December 2017

V(B) Range:-80 - 80DEG  
V(B) Interval: 5.0DEG  
Test System:EVERFINE GO-2000A\_V1 SYSTEM V2.0.366  
Humidity:65.0%  
Test Distance:6.010m [K=1.0000]  
Remarks:

### ISOLUX DIAGRAM

Test:U:120.18V I:0.3800A P:45.463W PF:0.9955 Freq:59.98Hz Lamp Flux:6050.75x1 lm		
NAME: LED Explosion-proof Flood Light	TYPE:Floodlight	WEIGHT:N/A
SPEC.:40W/3000K/110°	DIM.: 125*600mm	SERIAL No.:N/A
MFR.: NJZ Lighting Technology Co.,Ltd	SUR.:N/A	Shielding Angle:N/A



H( $\beta$ ) Range:-90 - 90DEG  
H( $\beta$ ) Interval: 1.0DEG  
Test Speed: HIGH  
Temperature:25.3DEG  
Operators:CL  
Test Date:04 December 2017

V(B) Range:-80 - 80DEG  
V(B) Interval: 5.0DEG  
Test System:EVERFINE GO-2000A\_V1 SYSTEM V2.0.366  
Humidity:65.0%  
Test Distance:6.010m [K=1.0000]  
Remarks:

### LED Avg.L Report

Test:U:120.18V I:0.3800A P:45.463W PF:0.9955 Freq:59.98Hz Lamp Flux:6050.75x1 lm		
NAME: LED Explosion-proof Flood Light	TYPE:Floodlight	WEIGHT:N/A
SPEC.:40W/3000K/110°	DIM.: 125*600mm	SERIAL No.:N/A
MFR.: NJZ Lighting Technology Co.,Ltd	SUR.:N/A	Shielding Angle:N/A

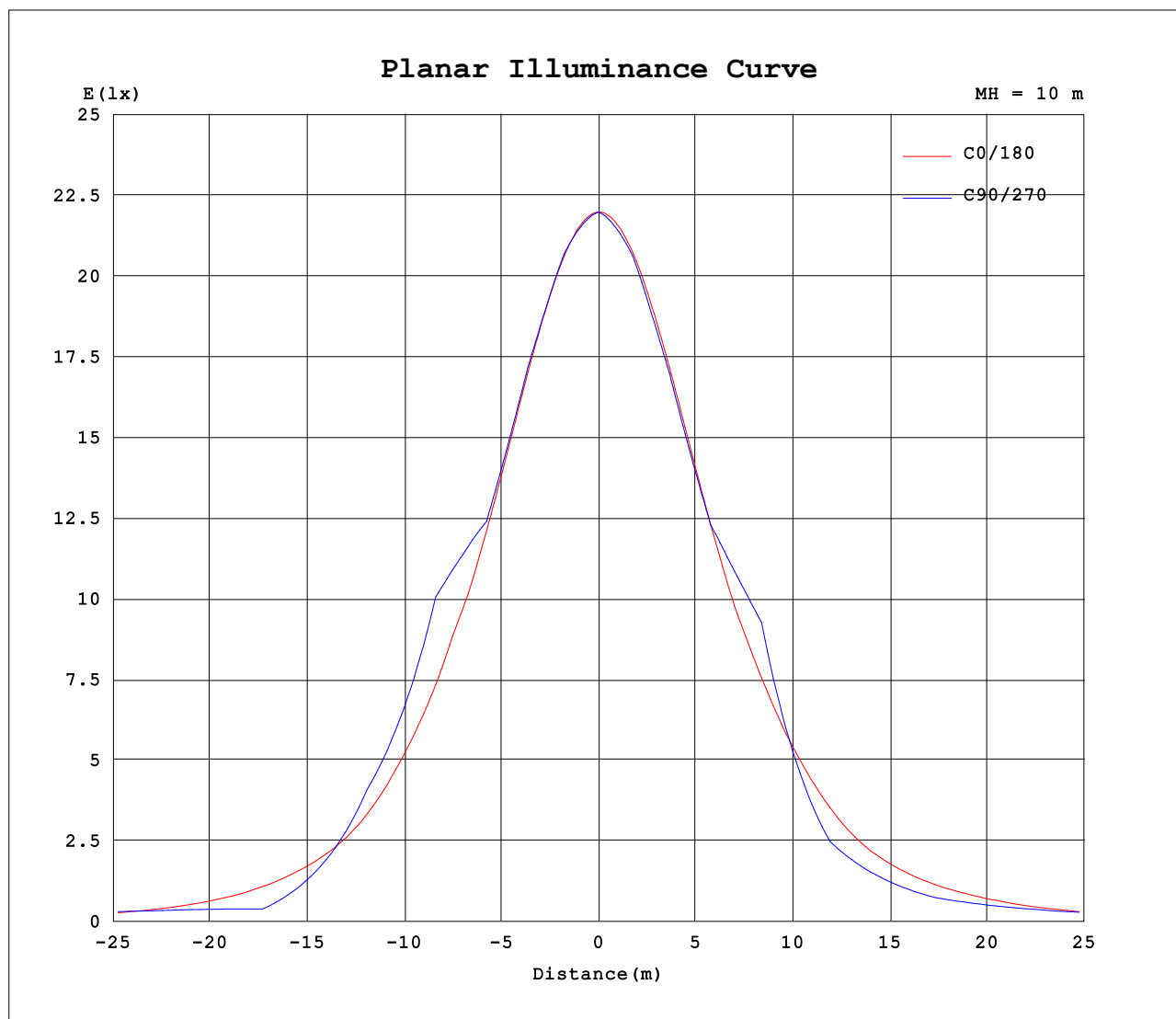
AvgL	cd/m2
L_0~180 (65) av	16514
L_0~180 (75) av	10851
L_0~180 (85) av	2449
L_90~270 (65) av	12607
L_90~270 (75) av	14151
L_90~270 (85) av	0
L_45 (65) av	11526
L_45 (75) av	13945
L_45 (85) av	3273

Standard: GB/T 29293-2012

H( $\beta$ ) Range:-90 - 90DEG  
H( $\beta$ ) Interval: 1.0DEG  
Test Speed: HIGH  
Temperature:25.3DEG  
Operators:CL  
Test Date:04 December 2017

V(B) Range:-80 - 80DEG  
V(B) Interval: 5.0DEG  
Test System:EVERFINE GO-2000A\_V1 SYSTEM V2.0.366  
Humidity:65.0%  
Test Distance:6.010m [K=1.0000]  
Remarks:

# Planar Illuminance Curve



H( $\beta$ ) Range:-90 - 90DEG  
H( $\beta$ ) Interval: 1.0DEG  
Test Speed: HIGH  
Temperature:25.3DEG  
Operators:CL  
Test Date:04 December 2017

V(B) Range:-80 - 80DEG  
V(B) Interval: 5.0DEG  
Test System:EVERFINE GO-2000A\_V1 SYSTEM V2.0.366  
Humidity:65.0%  
Test Distance:6.010m [K=1.0000]  
Remarks:

## LUMINOUS DISTRIBUTION INTENSITY DATA

Test:U:120.18V I:0.3800A P:45.463W PF:0.9955 Freq:59.98Hz Lamp Flux:6050.75x1 lm		
NAME: LED Explosion-proof Flood Light	TYPE:Floodlight	WEIGHT:N/A
SPEC.:40W/3000K/110°	DIM.: 125*600mm	SERIAL No.:N/A
MFR.: NJZ Lighting Technology Co.,Ltd	SUR.:N/A	Shielding Angle:N/A

Table--1

UNIT: cd

[illegible]

H( $\beta$ ) Range:-90 - 90DEG  
H( $\beta$ ) Interval: 1.0DEG  
Test Speed: HIGH  
Temperature:25.3DEG  
Operators:CL  
Test Date:04 December 2017

```
V(B) Range:-80 - 80DEG
V(B) Interval: 5.0DEG
Test System:EVERFINE GO-2000A_V1 SYSTEM V2.0.366
Humidity:65.0%
Test Distance:6.010m [K=1.0000]
Remarks:
```

## LUMINOUS DISTRIBUTION INTENSITY DATA

Test:U:120.18V I:0.3800A P:45.463W PF:0.9955 Freq:59.98Hz Lamp Flux:6050.75x1 lm		
NAME: LED Explosion-proof Flood Light	TYPE:Floodlight	WEIGHT:N/A
SPEC.:40W/3000K/110°	DIM.: 125*600mm	SERIAL No.:N/A
MFR.: NJZ Lighting Technology Co.,Ltd	SUR.:N/A	Shielding Angle:N/A

Table--2

UNIT: cd

[illegible]

H( $\beta$ ) Range:-90 - 90DEG  
H( $\beta$ ) Interval: 1.0DEG  
Test Speed: HIGH  
Temperature:25.3DEG  
Operators:CL  
Test Date:04 December 2017

```
V(B) Range:-80 - 80DEG
V(B) Interval: 5.0DEG
Test System:EVERFINE GO-2000A_V1 SYSTEM V2.0.366
Humidity:65.0%
Test Distance:6.010m [K=1.0000]
Remarks:
```

## LUMINOUS DISTRIBUTION INTENSITY DATA

Test:U:120.18V I:0.3800A P:45.463W PF:0.9955 Freq:59.98Hz Lamp Flux:6050.75x1 lm		
NAME: LED Explosion-proof Flood Light	TYPE:Floodlight	WEIGHT:N/A
SPEC.:40W/3000K/110°	DIM.: 125*600mm	SERIAL No.:N/A
MFR.: NJZ Lighting Technology Co.,Ltd	SUR.:N/A	Shielding Angle:N/A

Table--3

UNIT: cd

[illegible]

H( $\beta$ ) Range:-90 - 90DEG  
H( $\beta$ ) Interval: 1.0DEG  
Test Speed: HIGH  
Temperature:25.3DEG  
Operators:CL  
Test Date:04 December 2017

```
V(B) Range:-80 - 80DEG
V(B) Interval: 5.0DEG
Test System:EVERFINE GO-2000A_V1 SYSTEM V2.0.366
Humidity:65.0%
Test Distance:6.010m [K=1.0000]
Remarks:
```

## LUMINOUS DISTRIBUTION INTENSITY DATA

Test:U:120.18V I:0.3800A P:45.463W PF:0.9955 Freq:59.98Hz Lamp Flux:6050.75x1 lm		
NAME: LED Explosion-proof Flood Light	TYPE:Floodlight	WEIGHT:N/A
SPEC.:40W/3000K/110°	DIM.: 125*600mm	SERIAL No.:N/A
MFR.: NJZ Lighting Technology Co.,Ltd	SUR.:N/A	Shielding Angle:N/A

Table--4

UNIT: cd

[illegible]

H( $\beta$ ) Range:-90 - 90DEG  
H( $\beta$ ) Interval: 1.0DEG  
Test Speed: HIGH  
Temperature:25.3DEG  
Operators:CL  
Test Date:04 December 2017

```
V(B) Range:-80 - 80DEG
V(B) Interval: 5.0DEG
Test System:EVERFINE GO-2000A_V1 SYSTEM V2.0.366
Humidity:65.0%
Test Distance:6.010m [K=1.0000]
Remarks:
```