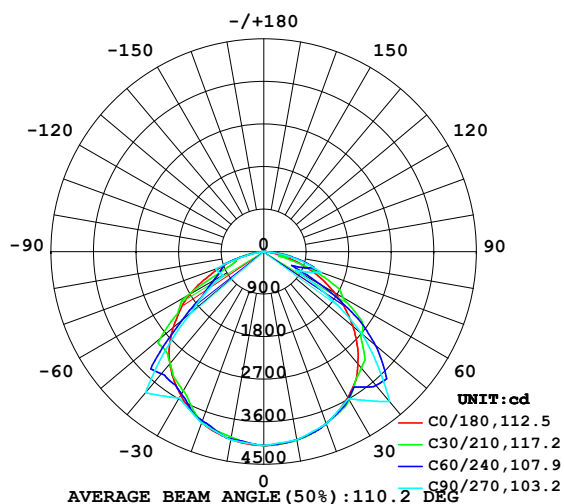


LUMINAIRE PHOTOMETRIC TEST REPORT

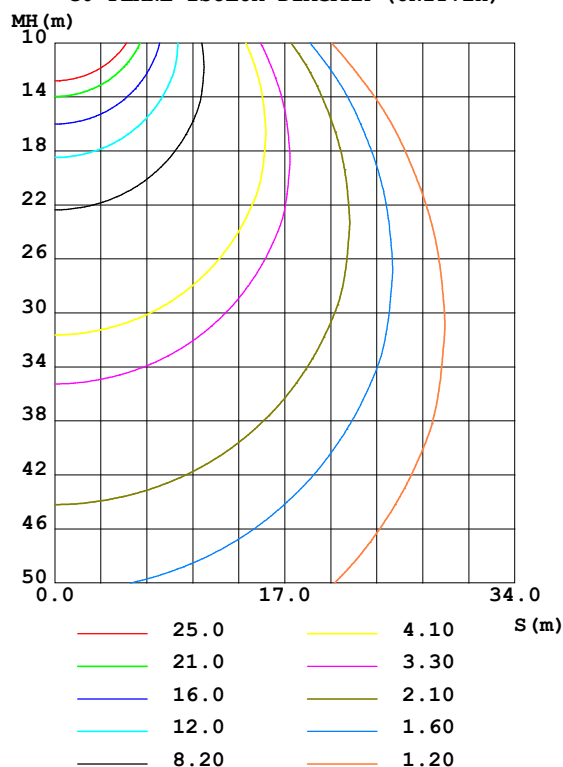
Test:U:120.04V I:0.7025A P:83.550W PF:0.9908 Freq:59.98Hz Lamp Flux:11486.1x1 lm		
NAME: LED Explosion-proof Flood Light	TYPE:Floodlight	WEIGHT:N/A
SPEC.:80W/Lumileds 5050/5000K/110°/M1.5A	DIM.: 130*1200mm	SERIAL No.:N/A
MFR.: NJZ Lighting Technology Co.,Ltd	SUR.:N/A	Shielding Angle:N/A

DATA OF LAMP		PHOTOMETRIC DATA Eff: 137.48 lm/W			
MODEL	NJZ-LED-E-80-V01-RZ-110-2101	Imax(cd)	4138	S/MH(C0/180)	1.27
NOMINAL POWER(W)	80	LOR(%)	100.0	S/MH(C90/270)	1.40
RATED VOLTAGE(V)	120	TOTAL FLUX(lm)	11486	η UP,DN(C0-180)	0.0,51.3
NOMINAL FLUX(lm)	11486.1	CIE CLASS	DIRECT	η UP,DN(C180-360)	0.0,48.7
LAMPS INSIDE	1	η up(%)	0.0	CIBSE SHR NOM	1.50
TEST VOLTAGE(V)	120	η down(%)	100.0	CIBSE SHR MAX	1.55

LUMINOUS INTENSITY DISTRIBUTION DIAGRAM



C0 PLANE ISOLUX DIAGRAM (UNIT:lx)



H(β) Range:-90 - 90DEG
H(β) Interval: 1.0DEG
Test Speed: HIGH
Temperature:25.3DEG
Operators:CL
Test Date:28 November 2017

V(B) Range:-80 - 80DEG
V(B) Interval: 5.0DEG
Test System:EVERFINE GO-2000A_V1 SYSTEM V2.0.366
Humidity:65.0%
Test Distance:6.010m [K=1.0000]
Remarks:

ZONAL FLUX DIAGRAM

ZONAL FLUX DIAGRAM:

γ	C0	C45	C90	C135	C180	C225	C270	C315	γ	Φ zone	Φ total	%lum, lamp
10	4042	4040	4040	4001	4030	4000	4041	4039	0- 10	387.0	387.0	3.37,3.37
20	3866	3890	3874	3786	3844	3776	3854	3882	10- 20	1115	1502	13.1,13.1
30	3560	3585	3588	3502	3512	3479	3575	3572	20- 30	1707	3209	27.9,27.9
40	3099	3243	4138	3141	3092	3186	3894	3251	30- 40	2169	5378	46.8,46.8
50	2466	3124	2719	2983	2503	2851	1997	2863	40- 50	2367	7745	67.4,67.4
60	1724	1974	781.4	1719	1800	1215	990.8	1555	50- 60	1835	9580	83.4,83.4
70	941.9	645.2	1297	587.7	960.7	841.7	1082	555.7	60- 70	1134	10715	93.3,93.3
80	217.1	561.4	467.0	310.6	248.4	240.5	46.21	322.1	70- 80	671.6	11386	99.1,99.1
90	3.824	0	0	0	8.107	0	0	0	80- 90	99.82	11486	100,100
100									90-100			
110									100-110			
120									110-120			
130									120-130			
140									130-140			
150									140-150			
160									150-160			
170									160-170			
180									170-180			
DEG	LUMINOUS INTENSITY:cd									UNIT:lm		

Conical surface Flux(90deg): 6589.6 lm

%lum = 57.4%

%lamp = 57.4%

Conical surface Flux(120deg): 9580.3 lm

%lum = 83.4%

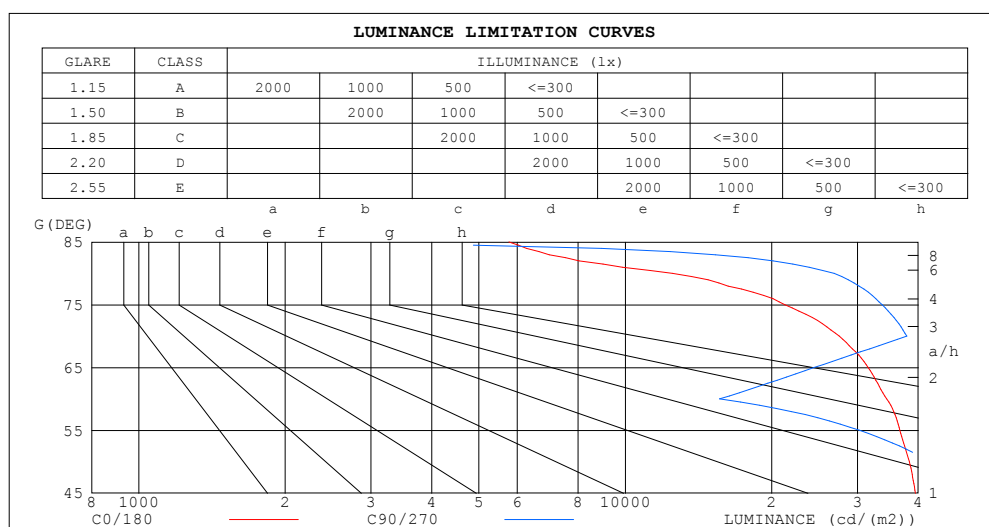
%lamp = 83.4%

H(β) Range:-90 - 90DEG
 H(β) Interval: 1.0DEG
 Test Speed: HIGH
 Temperature:25.3DEG
 Operators:CL
 Test Date:28 November 2017

V(B) Range:-80 - 80DEG
 V(B) Interval: 5.0DEG
 Test System:EVERFINE GO-2000A_V1 SYSTEM V2.0.366
 Humidity:65.0%
 Test Distance:6.010m [K=1.0000]
 Remarks:

LUMINANCE LIMITATION CURVES

Test:U:120.04V I:0.7025A P:83.550W PF:0.9908 Freq:59.98Hz Lamp Flux:11486.1x1 lm		
NAME: LED Explosion-proof Flood Light	TYPE:Floodlight	WEIGHT:N/A
SPEC.:80W/Lumileds 5050/5000K/110°/M1.5A	DIM.: 130*1200mm	SERIAL No.:N/A
MFR.: NJZ Lighting Technology Co.,Ltd	SUR.:N/A	Shielding Angle:N/A



LUMINANCE cd/(m2)		
G (DEG)	C0/180	C90/270
85	5761	0
80	12503	26893
75	21280	33720
70	27541	37913
65	31572	24438
60	34473	15629
55	36666	30280
50	38360	42297
45	39516	48193

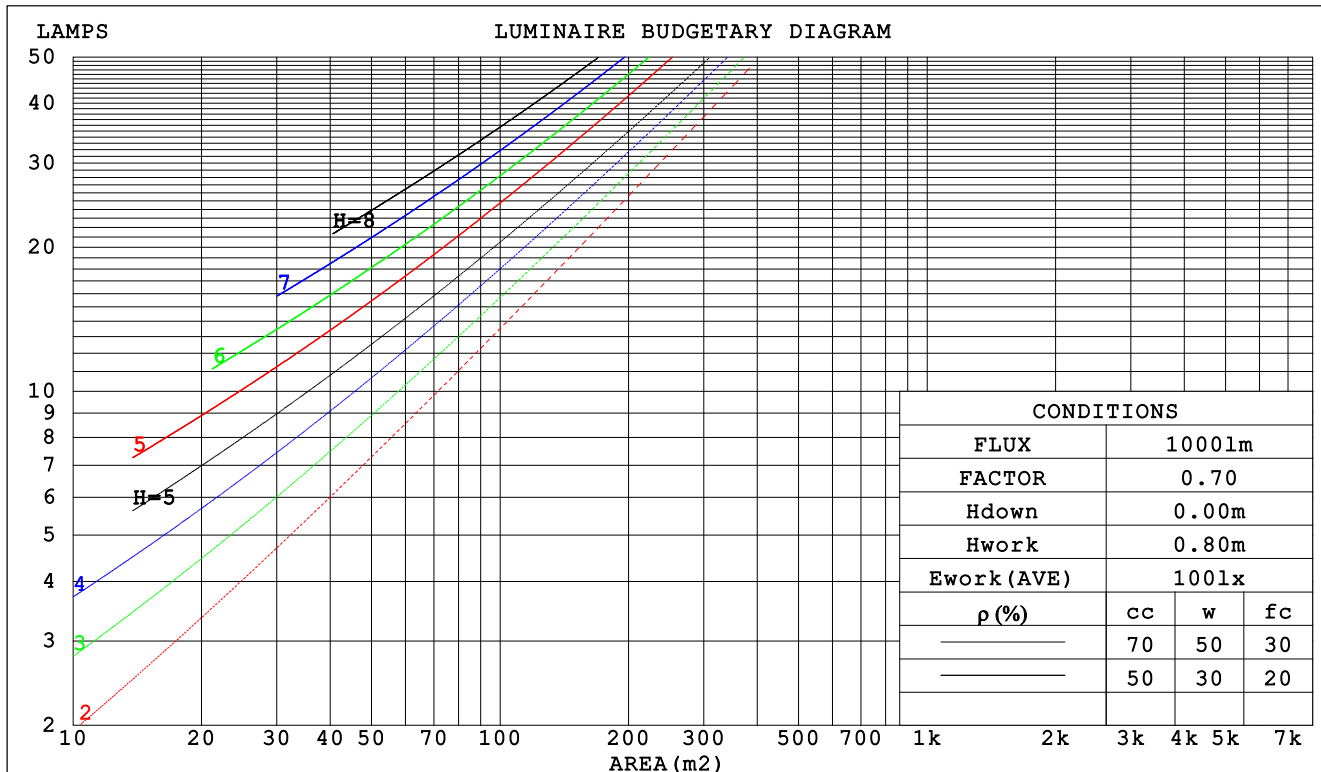
H(β) Range:-90 - 90DEG
H(β) Interval: 1.0DEG
Test Speed: HIGH
Temperature:25.3DEG
Operators:CL
Test Date:28 November 2017

V(B) Range:-80 - 80DEG
V(B) Interval: 5.0DEG
Test System:EVERFINE GO-2000A_V1 SYSTEM V2.0.366
Humidity:65.0%
Test Distance:6.010m [K=1.0000]
Remarks:

CU AND LUMINAIRE BUDGETARY ESTIMATE DIAGRAM

Test:U:120.04V I:0.7025A P:83.550W PF:0.9908 Freq:59.98Hz Lamp Flux:11486.1x1 lm		
NAME: LED Explosion-proof Flood Light	TYPE:Floodlight	WEIGHT:N/A
SPEC.:80W/Lumileds 5050/5000K/110°/M1.5A	DIM.: 130*1200mm	SERIAL No.:N/A
MFR.: NJZ Lighting Technology Co.,Ltd	SUR.:N/A	Shielding Angle:N/A

pcc	80%			70%			50%			30%			10%			0
p _w	50%	30%	10%	50%	30%	10%	50%	30%	10%	50%	30%	10%	50%	30%	10%	0
p _{fc}	20%			20%			20%			20%			20%			0
RCR	RCR:Room Cavity Ratio						Coefficients of Utilization(CU)									
0.0	1.19	1.19	1.19	1.16	1.16	1.16	1.11	1.11	1.11	1.06	1.06	1.06	1.02	1.02	1.02	1.00
1.0	1.05	1.01	.97	1.03	.99	.96	.99	.96	.93	.95	.92	.90	.91	.89	.87	.85
2.0	.92	.86	.80	.90	.84	.79	.87	.82	.77	.83	.79	.76	.80	.77	.74	.72
3.0	.81	.73	.67	.80	.72	.66	.77	.70	.65	.74	.69	.64	.71	.67	.63	.61
4.0	.72	.63	.57	.71	.63	.57	.68	.61	.56	.66	.60	.55	.64	.59	.54	.52
5.0	.64	.56	.49	.63	.55	.49	.61	.54	.48	.59	.53	.48	.57	.52	.47	.45
6.0	.58	.49	.43	.57	.49	.43	.55	.48	.42	.54	.47	.42	.52	.46	.42	.40
7.0	.53	.44	.38	.52	.44	.38	.50	.43	.37	.49	.42	.37	.47	.41	.37	.35
8.0	.48	.40	.34	.47	.39	.34	.46	.39	.33	.45	.38	.33	.43	.37	.33	.31
9.0	.44	.36	.30	.43	.36	.30	.42	.35	.30	.41	.35	.30	.40	.34	.30	.28
10.0	.40	.33	.27	.40	.32	.27	.39	.32	.27	.38	.32	.27	.37	.31	.27	.25



H(β) Range:-90 - 90DEG
 H(β) Interval: 1.0DEG
 Test Speed: HIGH
 Temperature:25.3DEG
 Operators:CL
 Test Date:28 November 2017

V(B) Range:-80 - 80DEG
 V(B) Interval: 5.0DEG
 Test System:EVERFINE GO-2000A_V1 SYSTEM V2.0.366
 Humidity:65.0%
 Test Distance:6.010m [K=1.0000]
 Remarks:

WEC AND CCEC

Test:U:120.04V I:0.7025A P:83.550W PF:0.9908 Freq:59.98Hz Lamp Flux:11486.1x1 lm		
NAME: LED Explosion-proof Flood Light	TYPE:Floodlight	WEIGHT:N/A
SPEC.:80W/Lumileds 5050/5000K/110°/M1.5A	DIM.: 130*1200mm	SERIAL No.:N/A
MFR.: NJZ Lighting Technology Co.,Ltd	SUR.:N/A	Shielding Angle:N/A

pcc	80%			70%			50%			30%			10%			0	
pw	50%	30%	10%	50%	30%	10%	50%	30%	10%	50%	30%	10%	50%	30%	10%	0	
pfc	20%			20%			20%			20%			20%			0	
RCR	RCR:Room Cavity Ratio						Wall Exitance Coefficients (WEC)										
0.0																	
1.0	.288	.164	.052	.281	.160	.051	.268	.154	.049	.256	.148	.047	.245	.142	.046		
2.0	.276	.152	.046	.270	.149	.046	.259	.144	.045	.248	.139	.044	.238	.135	.042		
3.0	.259	.138	.041	.253	.136	.041	.243	.132	.040	.234	.128	.039	.225	.124	.039		
4.0	.241	.125	.037	.236	.123	.036	.227	.120	.036	.218	.117	.035	.211	.114	.035		
5.0	.224	.114	.033	.220	.113	.033	.212	.110	.032	.204	.108	.032	.197	.105	.032		
6.0	.209	.105	.030	.205	.104	.030	.198	.101	.029	.191	.099	.029	.185	.097	.029		
7.0	.195	.096	.027	.192	.095	.027	.185	.094	.027	.179	.092	.027	.174	.090	.027		
8.0	.183	.089	.025	.180	.088	.025	.174	.087	.025	.169	.085	.025	.163	.084	.024		
9.0	.172	.083	.023	.169	.082	.023	.164	.081	.023	.159	.080	.023	.154	.078	.023		
10.0	.162	.078	.022	.159	.077	.021	.155	.076	.021	.150	.075	.021	.146	.074	.021		

pcc	80%			70%			50%			30%			10%			0
pw	50%	30%	10%	50%	30%	10%	50%	30%	10%	50%	30%	10%	50%	30%	10%	0
pfc	20%			20%			20%			20%			20%			0
RCR	RCR:Room Cavity Ratio						Ceiling Cavity Exitance Coefficients (CCEC)									
0.0	.190	.190	.190	.163	.163	.163	.111	.111	.111	.064	.064	.064	.020	.020	.020	
1.0	.179	.156	.136	.153	.134	.117	.105	.092	.081	.060	.053	.047	.019	.017	.015	
2.0	.170	.132	.100	.146	.114	.086	.100	.079	.060	.058	.046	.035	.018	.015	.012	
3.0	.162	.114	.076	.139	.099	.066	.096	.068	.046	.055	.040	.027	.018	.013	.009	
4.0	.155	.101	.060	.133	.087	.052	.091	.061	.036	.053	.036	.022	.017	.012	.007	
5.0	.148	.090	.048	.127	.078	.042	.087	.055	.030	.051	.032	.018	.016	.010	.006	
6.0	.141	.082	.040	.121	.071	.035	.083	.050	.025	.048	.029	.015	.016	.010	.005	
7.0	.134	.075	.034	.115	.065	.029	.080	.046	.021	.046	.027	.012	.015	.009	.004	
8.0	.128	.069	.029	.110	.060	.025	.076	.042	.018	.044	.025	.011	.014	.008	.004	
9.0	.122	.064	.025	.105	.056	.022	.073	.039	.016	.042	.023	.009	.014	.008	.003	
10.0	.116	.060	.023	.100	.052	.020	.070	.037	.014	.041	.022	.008	.013	.007	.003	

H(β) Range:-90 - 90DEG
H(β) Interval: 1.0DEG
Test Speed: HIGH
Temperature:25.3DEG
Operators:CL
Test Date:28 November 2017

V(B) Range:-80 - 80DEG
V(B) Interval: 5.0DEG
Test System:EVERFINE GO-2000A_V1 SYSTEM V2.0.366
Humidity:65.0%
Test Distance:6.010m [K=1.0000]
Remarks:

UGR(Unified Glare Rating) Table

Test:U:120.04V I:0.7025A P:83.550W PF:0.9908 Freq:59.98Hz Lamp Flux:11486.1x1 lm										
NAME: LED Explosion-proof Flood Light					TYPE:Floodlight			WEIGHT:N/A		
SPEC.:80W/Lumileds 5050/5000K/110°/M1.5A					DIM.: 130*1200mm			SERIAL No.:N/A		
MFR.: NJZ Lighting Technology Co.,Ltd					SUR.:N/A			Shielding Angle:N/A		
ceiling/cavity	0.7	0.7	0.5	0.5	0.3	0.7	0.7	0.5	0.5	0.3
walls	0.5	0.3	0.5	0.3	0.3	0.5	0.3	0.5	0.3	0.3
working plane	0.2	0.2	0.2	0.2	0.2	0.2	0.2	0.2	0.2	0.2
Room dimensions	Viewed crosswise					Viewed endwise				
x = 2H y = 2H	17.6	19.0	17.8	19.2	19.4	16.5	18.0	16.7	18.2	18.4
3H	18.9	20.3	19.2	20.5	20.7	18.1	19.4	18.4	19.7	19.9
4H	19.3	20.6	19.6	20.8	21.1	19.0	20.3	19.3	20.5	20.8
6H	19.5	20.7	19.8	21.0	21.3	19.5	20.7	19.8	21.0	21.3
8H	19.5	20.7	19.8	20.9	21.2	19.6	20.8	19.9	21.1	21.3
12H	19.5	20.6	19.8	20.9	21.2	19.6	20.7	19.9	21.0	21.3
4H 2H	17.9	19.2	18.3	19.5	19.7	17.0	18.3	17.3	18.5	18.8
3H	19.4	20.5	19.8	20.8	21.1	18.8	20.0	19.2	20.3	20.6
4H	19.9	20.9	20.3	21.2	21.6	20.0	21.0	20.3	21.3	21.6
6H	20.2	21.1	20.6	21.4	21.8	20.6	21.5	21.0	21.9	22.3
8H	20.2	21.0	20.6	21.4	21.8	20.8	21.6	21.2	22.0	22.4
12H	20.2	21.0	20.6	21.4	21.8	20.7	21.5	21.2	21.9	22.3
8H 4H	20.2	21.0	20.6	21.4	21.8	20.3	21.1	20.7	21.5	21.9
6H	20.7	21.4	21.2	21.8	22.2	21.1	21.8	21.6	22.2	22.6
8H	20.9	21.5	21.3	21.9	22.4	21.3	21.9	21.8	22.3	22.8
12H	21.0	21.5	21.5	22.0	22.4	21.3	21.8	21.8	22.3	22.8
12H 4H	20.2	21.0	20.7	21.4	21.8	20.3	21.1	20.7	21.4	21.9
6H	20.8	21.4	21.3	21.8	22.3	21.2	21.8	21.6	22.2	22.7
8H	21.0	21.6	21.5	22.0	22.5	21.4	21.9	21.9	22.4	22.8
Variations with the observer position at spacings:										
S = 1.0H	+ 0.2 / - 0.3					+ 0.2 / - 0.2				
1.5H	+ 0.6 / - 1.1					+ 0.4 / - 0.7				
2.0H	+ 0.8 / - 1.3					+ 0.9 / - 1.7				

CIE Pub.117, 11486 lm Total Lamp Luminous Flux Correct (8log(F/F0) = 8.5)

H(β) Range:-90 - 90DEG
H(β) Interval: 1.0DEG
Test Speed: HIGH
Temperature:25.3DEG
Operators:CL
Test Date:28 November 2017

V(B) Range:-80 - 80DEG
V(B) Interval: 5.0DEG
Test System:EVERFINE GO-2000A_V1 SYSTEM V2.0.366
Humidity:65.0%
Test Distance:6.010m [K=1.0000]
Remarks:

UTILIZATION FACTORS TABLE

Test:U:120.04V I:0.7025A P:83.550W PF:0.9908 Freq:59.98Hz Lamp Flux:11486.1x1 lm		
NAME: LED Explosion-proof Flood Light	TYPE:Floodlight	WEIGHT:N/A
SPEC.:80W/Lumileds 5050/5000K/110°/M1.5A	DIM.: 130*1200mm	SERIAL No.:N/A
MFR.: NJZ Lighting Technology Co.,Ltd	SUR.:N/A	Shielding Angle:N/A

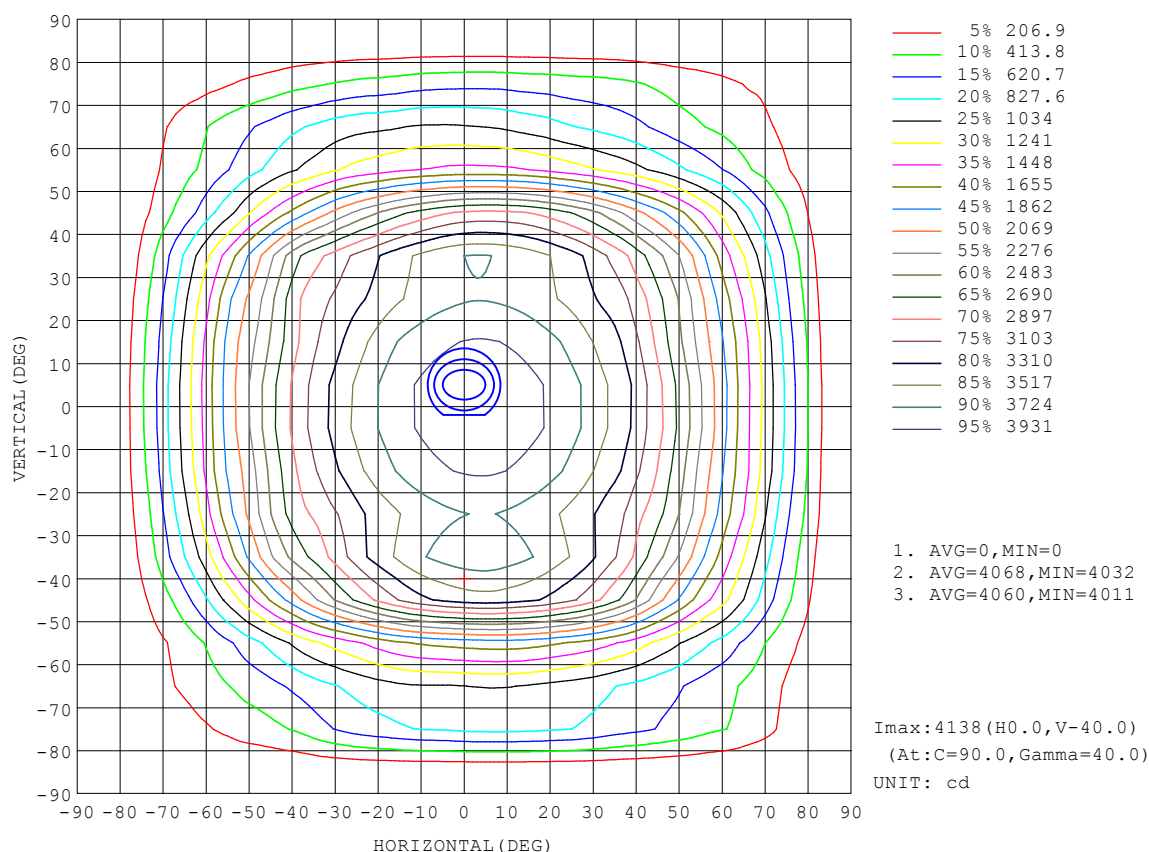
REFLECTANCE										
Ceiling	0.8	0.8	0.8	0.7	0.7	0.7	0.5	0.5	0.5	0
Walls	0.7	0.5	0.3	0.7	0.5	0.3	0.7	0.5	0.3	0
Working plane	0.2	0.2	0.2	0.2	0.2	0.2	0.2	0.2	0.2	0
ROOM INDEX	UTILIZATION FACTORS (PERCENT) $k(RI) \times RCR = 5$									
$k = 0.60$	58	47	40	58	47	40	57	46	40	33
0.80	69	58	50	68	57	50	66	56	50	43
1.00	78	67	60	76	66	60	74	68	59	52
1.25	85	75	68	83	74	68	81	73	67	60
1.50	90	80	74	88	80	73	85	78	72	65
2.00	97	88	82	95	87	82	91	85	80	73
2.50	100	93	87	98	91	86	94	89	84	76
3.00	103	97	92	101	95	91	97	92	88	80
4.00	107	102	97	105	100	96	101	97	93	85
5.00	109	105	101	107	103	99	102	99	96	87
ROOM INDEX	UF (total)									Direct
According to DIN EN 13032-2 2004			Suspended					SHRNOM = 1.25		

$H(\beta)$ Range:-90 - 90DEG
 $H(\beta)$ Interval: 1.0DEG
 Test Speed: HIGH
 Temperature:25.3DEG
 Operators:CL
 Test Date:28 November 2017

$V(B)$ Range:-80 - 80DEG
 $V(B)$ Interval: 5.0DEG
 Test System:EVERFINE GO-2000A_V1 SYSTEM V2.0.366
 Humidity:65.0%
 Test Distance:6.010m [K=1.0000]
 Remarks:

ISOCANDELA DIAGRAM

Test:U:120.04V I:0.7025A P:83.550W PF:0.9908 Freq:59.98Hz Lamp Flux:11486.1x1 lm		
NAME: LED Explosion-proof Flood Light	TYPE:Floodlight	WEIGHT:N/A
SPEC.:80W/Lumileds 5050/5000K/110°/M1.5A	DIM.: 130*1200mm	SERIAL No.:N/A
MFR.: NJZ Lighting Technology Co.,Ltd	SUR.:N/A	Shielding Angle:N/A



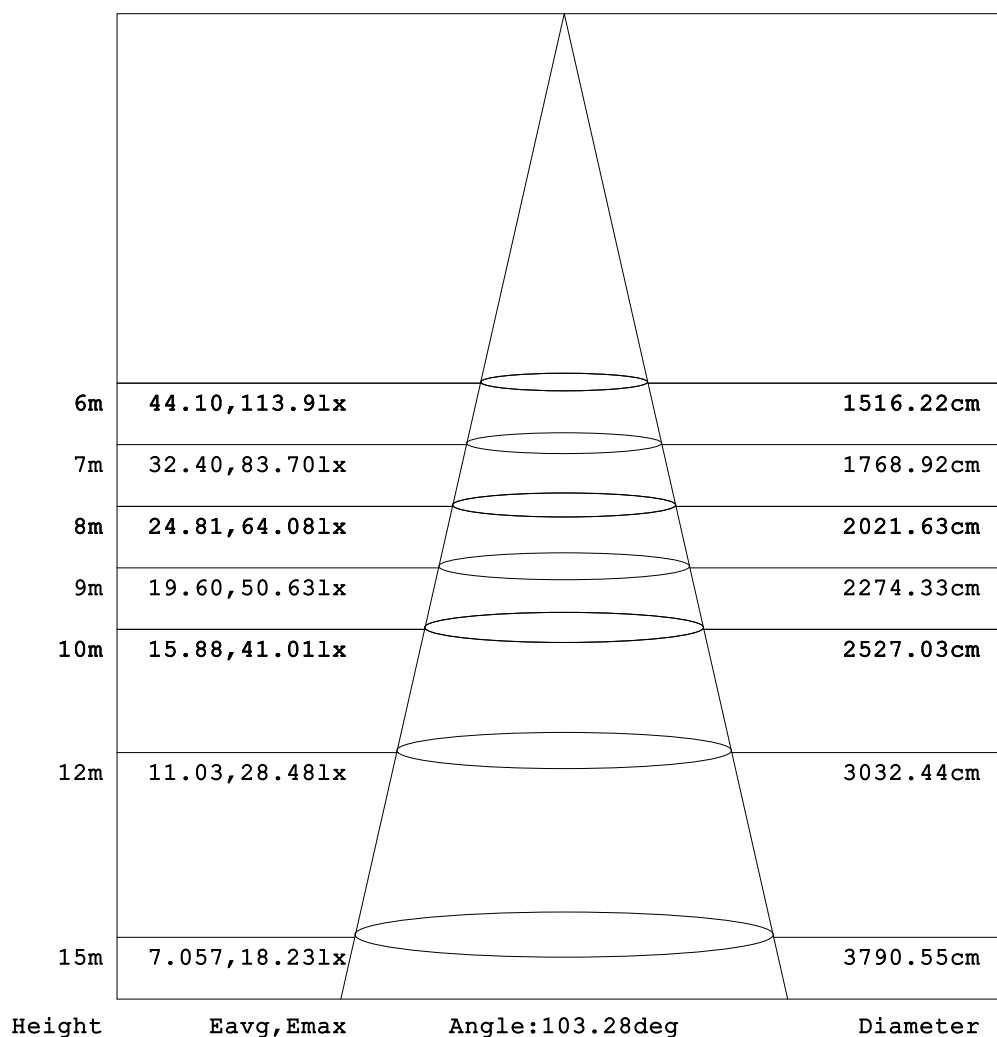
H(β) Range:-90 - 90DEG
H(β) Interval: 1.0DEG
Test Speed: HIGH
Temperature:25.3DEG
Operators:CL
Test Date:28 November 2017

V(B) Range:-80 - 80DEG
V(B) Interval: 5.0DEG
Test System:EVERFINE GO-2000A_V1 SYSTEM V2.0.366
Humidity:65.0%
Test Distance:6.010m [K=1.0000]
Remarks:

AAI Figure

Test:U:120.04V I:0.7025A P:83.550W PF:0.9908 Freq:59.98Hz Lamp Flux:11486.1x1 lm		
NAME: LED Explosion-proof Flood Light	TYPE:Floodlight	WEIGHT:N/A
SPEC.:80W/Lumileds 5050/5000K/110°/M1.5A	DIM.: 130*1200mm	SERIAL No.:N/A
MFR.: NJZ Lighting Technology Co.,Ltd	SUR.:N/A	Shielding Angle:N/A

Flux out:8172 lm



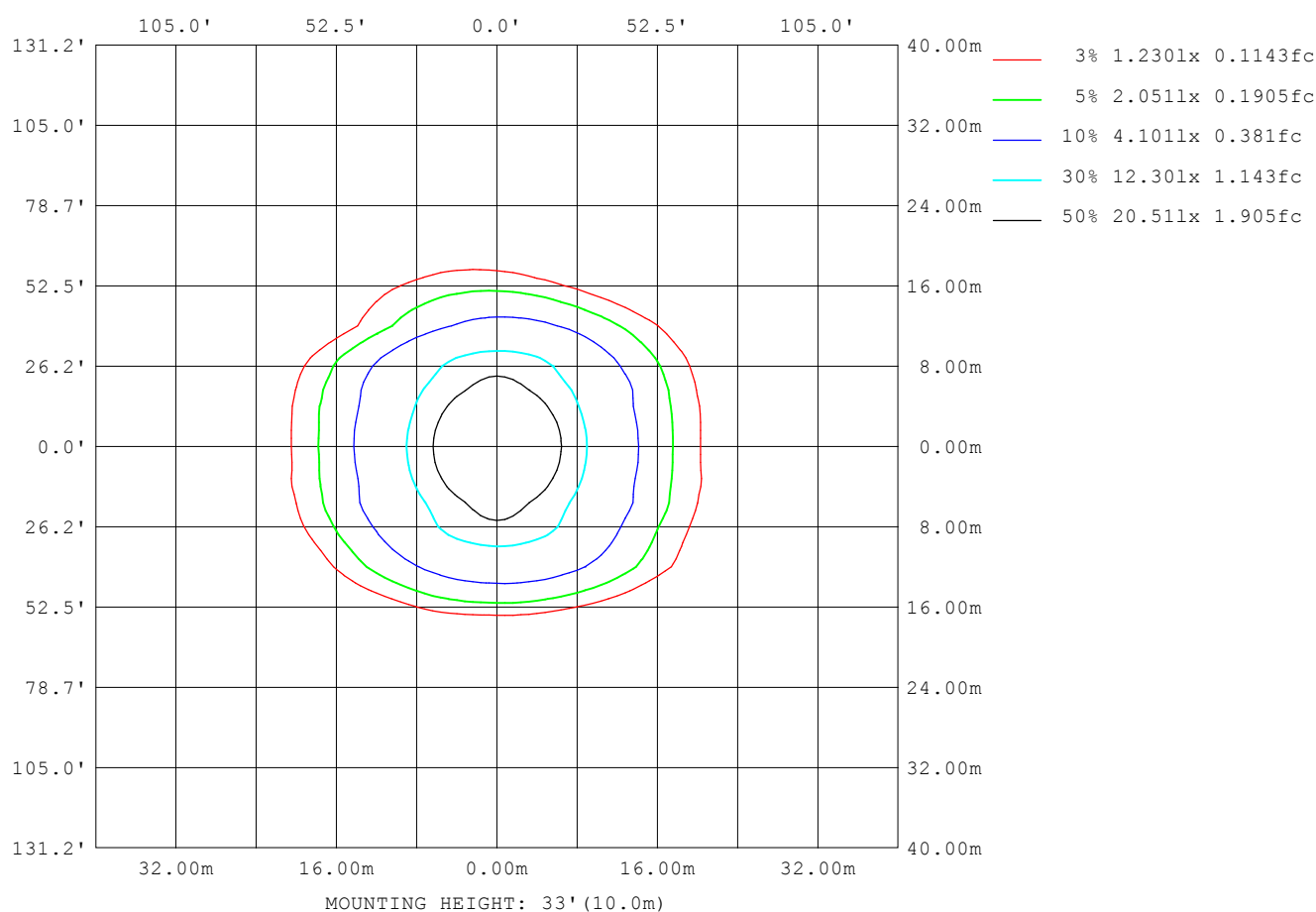
Note:The Curves indicate the illuminated area and the average illumination when the luminaire is at different distance.

H(β) Range:-90 - 90DEG
H(β) Interval: 1.0DEG
Test Speed: HIGH
Temperature:25.3DEG
Operators:CL
Test Date:28 November 2017

V(B) Range:-80 - 80DEG
V(B) Interval: 5.0DEG
Test System:EVERFINE GO-2000A_V1 SYSTEM V2.0.366
Humidity:65.0%
Test Distance:6.010m [K=1.0000]
Remarks:

ISOLUX DIAGRAM

Test:U:120.04V I:0.7025A P:83.550W PF:0.9908 Freq:59.98Hz Lamp Flux:11486.1x1 lm		
NAME: LED Explosion-proof Flood Light	TYPE:Floodlight	WEIGHT:N/A
SPEC.:80W/Lumileds 5050/5000K/110°/M1.5A	DIM.: 130*1200mm	SERIAL No.:N/A
MFR.: NJZ Lighting Technology Co.,Ltd	SUR.:N/A	Shielding Angle:N/A



H(β) Range:-90 - 90DEG
H(β) Interval: 1.0DEG
Test Speed: HIGH
Temperature:25.3DEG
Operators:CL
Test Date:28 November 2017

V(B) Range:-80 - 80DEG
V(B) Interval: 5.0DEG
Test System:EVERFINE GO-2000A_V1 SYSTEM V2.0.366
Humidity:65.0%
Test Distance:6.010m [K=1.0000]
Remarks:

LED Avg.L Report

Test:U:120.04V I:0.7025A P:83.550W PF:0.9908 Freq:59.98Hz Lamp Flux:11486.1x1 lm		
NAME: LED Explosion-proof Flood Light	TYPE:Floodlight	WEIGHT:N/A
SPEC.:80W/Lumileds 5050/5000K/110°/M1.5A	DIM.: 130*1200mm	SERIAL No.:N/A
MFR.: NJZ Lighting Technology Co.,Ltd	SUR.:N/A	Shielding Angle:N/A

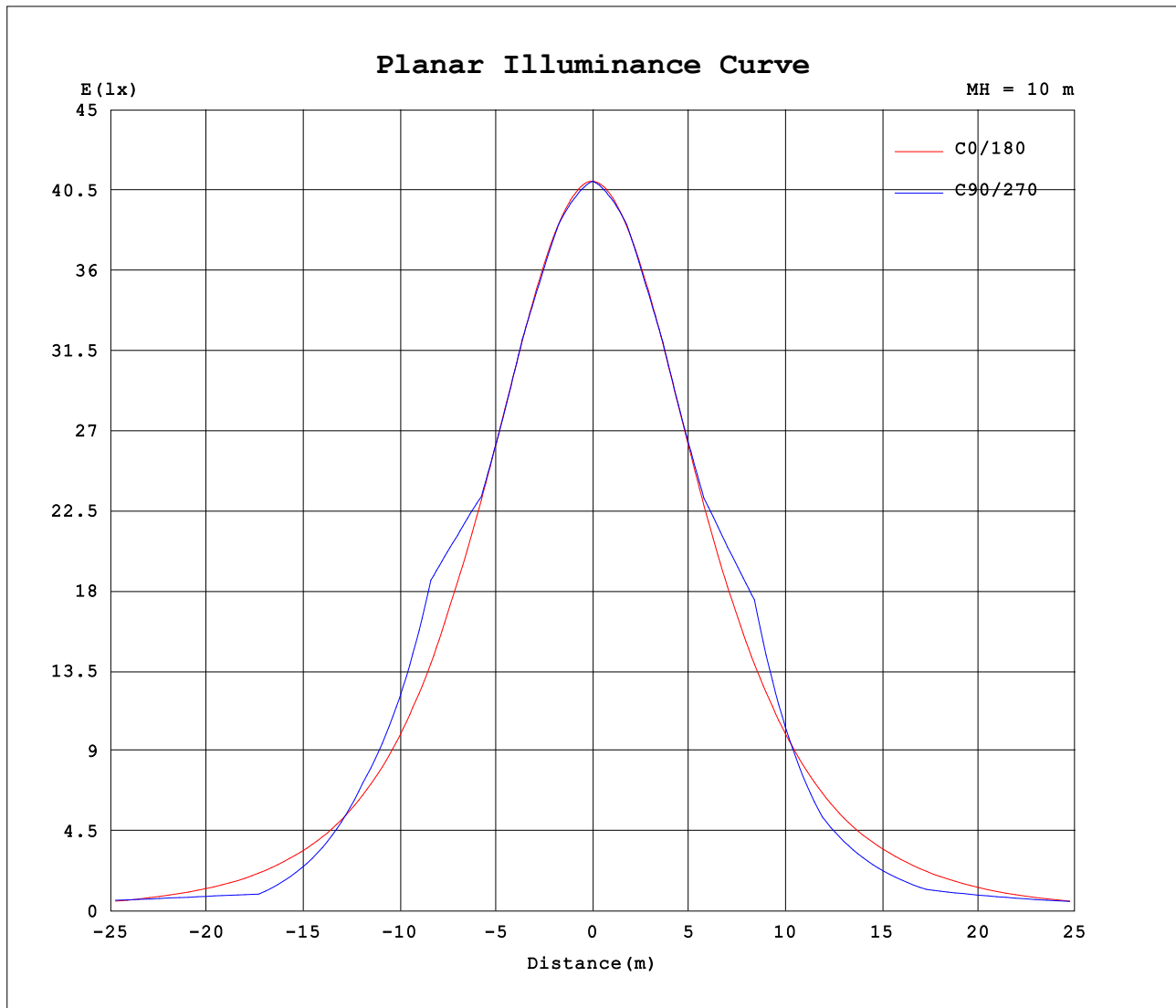
AvgL	cd/m2
L_0~180 (65) av	31938
L_0~180 (75) av	21853
L_0~180 (85) av	6147
L_90~270 (65) av	24613
L_90~270 (75) av	27726
L_90~270 (85) av	0
L_45 (65) av	22980
L_45 (75) av	28367
L_45 (85) av	5349

Standard: GB/T 29293-2012

H(β) Range:-90 - 90DEG
H(β) Interval: 1.0DEG
Test Speed: HIGH
Temperature:25.3DEG
Operators:CL
Test Date:28 November 2017

V(B) Range:-80 - 80DEG
V(B) Interval: 5.0DEG
Test System:EVERFINE GO-2000A_V1 SYSTEM V2.0.366
Humidity:65.0%
Test Distance:6.010m [K=1.0000]
Remarks:

Planar Illuminance Curve



H(β) Range:-90 - 90DEG
 H(β) Interval: 1.0DEG
 Test Speed: HIGH
 Temperature:25.3DEG
 Operators:CL
 Test Date:28 November 2017

V(B) Range:-80 - 80DEG
 V(B) Interval: 5.0DEG
 Test System:EVERFINE GO-2000A_V1 SYSTEM V2.0.366
 Humidity:65.0%
 Test Distance:6.010m [K=1.0000]
 Remarks:

LUMINOUS DISTRIBUTION INTENSITY DATA

Test:U:120.04V I:0.7025A P:83.550W PF:0.9908 Freq:59.98Hz Lamp Flux:11486.1x1 lm		
NAME: LED Explosion-proof Flood Light	TYPE:Floodlight	WEIGHT:N/A
SPEC.:80W/Lumileds 5050/5000K/110°/M1.5A	DIM.: 130*1200mm	SERIAL No.:N/A
MFR.: NJZ Lighting Technology Co.,Ltd	SUR.:N/A	Shielding Angle:N/A

Table--1

UNIT: cd

[illegible]

```
H( $\beta$ ) Range:-90 - 90DEG
H( $\beta$ ) Interval: 1.0DEG
Test Speed: HIGH
Temperature:25.3DEG
Operators:CL
Test Date:28 November 2017
```

```
V(B) Range:-80 - 80DEG
V(B) Interval: 5.0DEG
Test System:EVERFINE GO-2000A_V1 SYSTEM V2.0.366
Humidity:65.0%
Test Distance:6.010m [K=1.0000]
Remarks:
```

LUMINOUS DISTRIBUTION INTENSITY DATA

Test:U:120.04V I:0.7025A P:83.550W PF:0.9908 Freq:59.98Hz Lamp Flux:11486.1x1 lm		
NAME: LED Explosion-proof Flood Light	TYPE:Floodlight	WEIGHT:N/A
SPEC.:80W/Lumileds 5050/5000K/110°/M1.5A	DIM.: 130*1200mm	SERIAL No.:N/A
MFR.: NJZ Lighting Technology Co.,Ltd	SUR.:N/A	Shielding Angle:N/A

Table--2

UNIT: cd

[illegible]

```
H( $\beta$ ) Range:-90 - 90DEG
H( $\beta$ ) Interval: 1.0DEG
Test Speed: HIGH
Temperature:25.3DEG
Operators:CL
Test Date:28 November 2017
```

```
V(B) Range:-80 - 80DEG
V(B) Interval: 5.0DEG
Test System:EVERFINE GO-2000A_V1 SYSTEM V2.0.366
Humidity:65.0%
Test Distance:6.010m [K=1.0000]
Remarks:
```

LUMINOUS DISTRIBUTION INTENSITY DATA

Test:U:120.04V I:0.7025A P:83.550W PF:0.9908 Freq:59.98Hz Lamp Flux:11486.1x1 lm		
NAME: LED Explosion-proof Flood Light	TYPE:Floodlight	WEIGHT:N/A
SPEC.:80W/Lumileds 5050/5000K/110°/M1.5A	DIM.: 130*1200mm	SERIAL No.:N/A
MFR.: NJZ Lighting Technology Co.,Ltd	SUR.:N/A	Shielding Angle:N/A

Table--3

UNIT: cd

[illegible]

```
H( $\beta$ ) Range:-90 - 90DEG
H( $\beta$ ) Interval: 1.0DEG
Test Speed: HIGH
Temperature:25.3DEG
Operators:CL
Test Date:28 November 2017
```

```
V(B) Range:-80 - 80DEG
V(B) Interval: 5.0DEG
Test System:EVERFINE GO-2000A_V1 SYSTEM V2.0.366
Humidity:65.0%
Test Distance:6.010m [K=1.0000]
Remarks:
```

LUMINOUS DISTRIBUTION INTENSITY DATA

Test:U:120.04V I:0.7025A P:83.550W PF:0.9908 Freq:59.98Hz Lamp Flux:11486.1x1 lm		
NAME: LED Explosion-proof Flood Light	TYPE:Floodlight	WEIGHT:N/A
SPEC.:80W/Lumileds 5050/5000K/110°/M1.5A	DIM.: 130*1200mm	SERIAL No.:N/A
MFR.: NJZ Lighting Technology Co.,Ltd	SUR.:N/A	Shielding Angle:N/A

Table--4

UNIT: cd

[illegible]

```
H( $\beta$ ) Range:-90 - 90DEG
H( $\beta$ ) Interval: 1.0DEG
Test Speed: HIGH
Temperature:25.3DEG
Operators:CL
Test Date:28 November 2017
```

```
V(B) Range:-80 - 80DEG
V(B) Interval: 5.0DEG
Test System:EVERFINE GO-2000A_V1 SYSTEM V2.0.366
Humidity:65.0%
Test Distance:6.010m [K=1.0000]
Remarks:
```